

**Product Name: GPR83 Rabbit Polyclonal Antibody**  
**Catalog #: APRab11702**



## Summary

<b>Production Name</b>	GPR83 Rabbit Polyclonal Antibody
<b>Description</b>	Rabbit Polyclonal Antibody
<b>Host</b>	Rabbit
<b>Application</b>	WB,ELISA
<b>Reactivity</b>	Human,Rat,Mouse

## Performance

<b>Conjugation</b>	Unconjugated
<b>Modification</b>	Unmodified
<b>Isotype</b>	IgG
<b>Clonality</b>	Polyclonal
<b>Form</b>	Liquid
<b>Storage</b>	Store at 4°C short term. Aliquot and store at -20°C long term. Avoid freeze/thaw cycles.
<b>Buffer</b>	Liquid in PBS containing 50% glycerol, 0.5% BSA and 0.02% New type preservative N.
<b>Purification</b>	Affinity purification

## Immunogen

<b>Gene Name</b>	GPR83
<b>Alternative Names</b>	GPR83; GPR72; KIAA1540; Probable G-protein coupled receptor 83; G-protein coupled receptor 72
<b>Gene ID</b>	10888.0
<b>SwissProt ID</b>	Q9NYM4.The antiserum was produced against synthesized peptide derived from human GPR83. AA range:361-410

## Application

<b>Dilution Ratio</b>	WB 1:500 - 1:2000. ELISA: 1:5000. Not yet tested in other applications.
<b>Molecular Weight</b>	48kD

**Product Name: GPR83 Rabbit Polyclonal Antibody**  
**Catalog #: AP Rab11702**



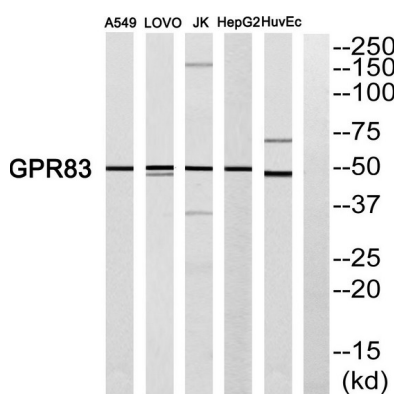
## Background

function: Orphan receptor. Could be a neuropeptide y receptor., similarity: Belongs to the G-protein coupled receptor 1 family., tissue specificity: Brain specific., function: Orphan receptor. Could be a neuropeptide y receptor., similarity: Belongs to the G-protein coupled receptor 1 family., tissue specificity: Brain specific.,

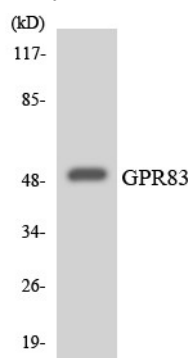
## Research Area

Neuroactive ligand-receptor interaction;

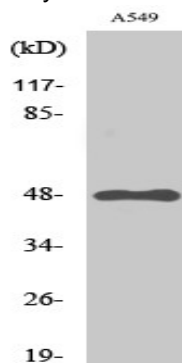
## Image Data



Western blot analysis of GPR83 Antibody. The lane on the right is blocked with the GPR83 peptide.



Western blot analysis of the lysates from HeLa cells using GPR83 antibody.



**Product Name: GPR83 Rabbit Polyclonal Antibody**  
**Catalog #: APRab11702**



---

Western Blot analysis of various cells using GPR83 Polyclonal Antibody

**Note**

For research use only.