

Product Name: GPR82 Rabbit Polyclonal Antibody
Catalog #: APRab11701



Summary

Production Name	GPR82 Rabbit Polyclonal Antibody
Description	Rabbit Polyclonal Antibody
Host	Rabbit
Application	WB,ELISA
Reactivity	Human,Mouse

Performance

Conjugation	Unconjugated
Modification	Unmodified
Isotype	IgG
Clonality	Polyclonal
Form	Liquid
Storage	Store at 4°C short term. Aliquot and store at -20°C long term. Avoid freeze/thaw cycles.
Buffer	Liquid in PBS containing 50% glycerol, 0.5% BSA and 0.02% New type preservative N.
Purification	Affinity purification

Immunogen

Gene Name	GPR82
Alternative Names	GPR82; Probable G-protein coupled receptor 82
Gene ID	27197.0
SwissProt ID	Q96P67.The antiserum was produced against synthesized peptide derived from human GPR82. AA range:121-170

Application

Dilution Ratio	WB 1:500 - 1:2000. ELISA: 1:10000
Molecular Weight	35kD

Background

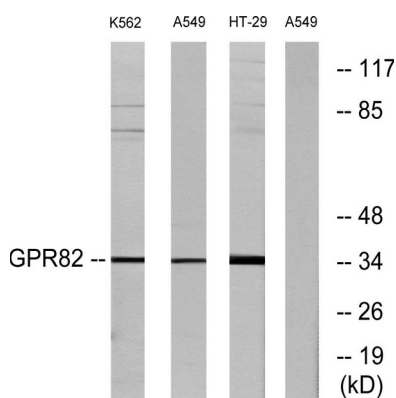
Product Name: GPR82 Rabbit Polyclonal Antibody
Catalog #: APRab11701



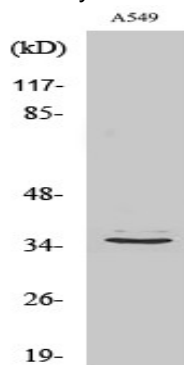
The protein encoded by this gene is an orphan G protein-coupled receptor of unknown function. The encoded protein is a member of a family of proteins that contain seven transmembrane domains and transduce extracellular signals through heterotrimeric G proteins. [provided by RefSeq, Sep 2011],function:Orphan receptor.,similarity:Belongs to the G-protein coupled receptor 1 family.,

Research Area

Image Data



Western blot analysis of lysates from A549, K562, and HT-29 cells, using GPR82 Antibody. The lane on the right is blocked with the synthesized peptide.



Western Blot analysis of various cells using GPR82 Polyclonal Antibody

Note

For research use only.