

Product Name: GPR56 Rabbit Polyclonal Antibody
Catalog #: APRab11692



Summary

Production Name	GPR56 Rabbit Polyclonal Antibody
Description	Rabbit Polyclonal Antibody
Host	Rabbit
Application	IF, WB, ELISA
Reactivity	Human, Rat, Mouse

Performance

Conjugation	Unconjugated
Modification	Unmodified
Isotype	IgG
Clonality	Polyclonal
Form	Liquid
Storage	Store at 4°C short term. Aliquot and store at -20°C long term. Avoid freeze/thaw cycles.
Buffer	Liquid in PBS containing 50% glycerol, 0.5% BSA and 0.02% New type preservative N.
Purification	Affinity purification

Immunogen

Gene Name	GPR56
Alternative Names	GPR56; TM7LN4; TM7XN1; G-protein coupled receptor 56; Protein TM7XN1
Gene ID	9289.0
SwissProt ID	Q9Y653. The antiserum was produced against synthesized peptide derived from human GPR56. AA range: 251-300

Application

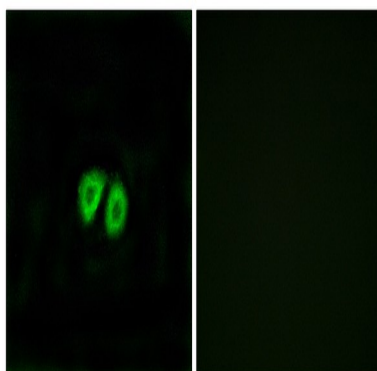
Dilution Ratio	WB 1:500 - 1:2000. IF 1:200 - 1:1000. ELISA: 1:20000. Not yet tested in other applications.
Molecular Weight	78kD

Background

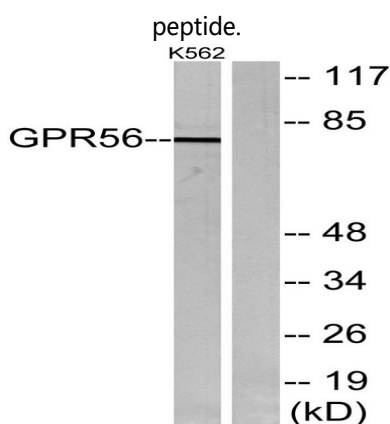
This gene encodes a member of the G protein-coupled receptor family and regulates brain cortical patterning. The encoded protein binds specifically to transglutaminase 2, a component of tissue and tumor stroma implicated as an inhibitor of tumor progression. Mutations in this gene are associated with a brain malformation known as bilateral frontoparietal polymicrogyria. Alternative splicing results in multiple transcript variants. [provided by RefSeq, Feb 2014],disease:Defects in GPR56 are the cause of bilateral frontoparietal polymicrogyria (BFPP) [MIM:606854]. BFPP is characterized by disorganized cortical lamination that is most severe in frontal cortex.,function:Could be involved in cell-cell interactions.,similarity:Belongs to the G-protein coupled receptor 2 family. LN-TM7 subfamily.,similarity:Contains 1 GPS domain.,tissue specificity:Widely distributed with highest levels found in thyroid gland, brain and heart. Expressed in a great number of tumor cells.,

Research Area

Image Data

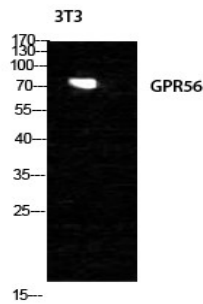


Immunofluorescence analysis of MCF7 cells, using GPR56 Antibody. The picture on the right is blocked with the synthesized



Western blot analysis of lysates from K562 cells, using GPR56 Antibody. The lane on the right is blocked with the synthesized peptide.

Product Name: GPR56 Rabbit Polyclonal Antibody
Catalog #: APRab11692



Western Blot analysis of NIH-3T3 cells using GPR56 Polyclonal Antibody diluted at 1: 1000

Note

For research use only.