

Product Name: GPR52 Rabbit Polyclonal Antibody
Catalog #: APRab11690



Summary

Production Name	GPR52 Rabbit Polyclonal Antibody
Description	Rabbit Polyclonal Antibody
Host	Rabbit
Application	WB,ELISA
Reactivity	Human,Rat,Mouse

Performance

Conjugation	Unconjugated
Modification	Unmodified
Isotype	IgG
Clonality	Polyclonal
Form	Liquid
Storage	Store at 4°C short term. Aliquot and store at -20°C long term. Avoid freeze/thaw cycles.
Buffer	Liquid in PBS containing 50% glycerol, 0.5% BSA and 0.02% New type preservative N.
Purification	Affinity purification

Immunogen

Gene Name	GPR52
Alternative Names	GPR52; Probable G-protein coupled receptor 52
Gene ID	9293.0
SwissProt ID	Q9Y2T5.The antiserum was produced against synthesized peptide derived from human GPR52. AA range:311-360

Application

Dilution Ratio	WB 1:500 - 1:2000. ELISA: 1:10000. Not yet tested in other applications.
Molecular Weight	41kD

Background

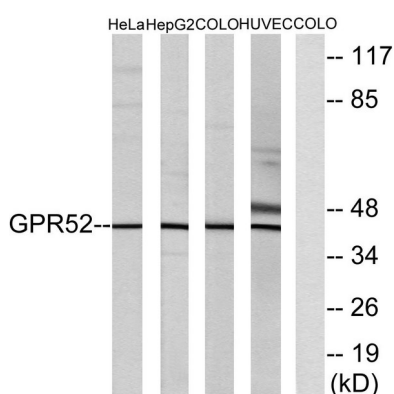
Product Name: GPR52 Rabbit Polyclonal Antibody
Catalog #: AP Rab11690



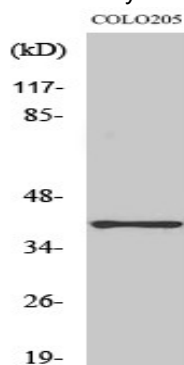
Members of the G protein-coupled receptor (GPR) family play important roles in signal transduction from the external environment to the inside of the cell.[supplied by OMIM, Jul 2002],function:Orphan receptor.,similarity:Belongs to the G-protein coupled receptor 1 family.,

Research Area

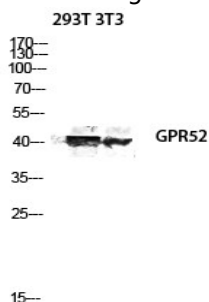
Image Data



Western blot analysis of lysates from COLO, HUVEC, HeLa, and HepG2 cells, using GPR52 Antibody. The lane on the right is blocked with the synthesized peptide.



Western Blot analysis of various cells using GPR52 Polyclonal Antibody diluted at 1 : 2000



Product Name: GPR52 Rabbit Polyclonal Antibody
Catalog #: APRab11690



Western blot analysis of 293T 3T3 lysis using GPR52 antibody. Antibody was diluted at 1:2000

Note

For research use only.