

Product Name: GPR37L1 Rabbit Polyclonal Antibody
Catalog #: AP Rab11679



Summary

Production Name	GPR37L1 Rabbit Polyclonal Antibody
Description	Rabbit Polyclonal Antibody
Host	Rabbit
Application	IF,IHC,WB,ELISA
Reactivity	Human,Rat,Mouse

Performance

Conjugation	Unconjugated
Modification	Unmodified
Isotype	IgG
Clonality	Polyclonal
Form	Liquid
Storage	Store at 4°C short term. Aliquot and store at -20°C long term. Avoid freeze/thaw cycles.
Buffer	Liquid in PBS containing 50% glycerol, 0.5% BSA and 0.02% New type preservative N.
Purification	Affinity purification

Immunogen

Gene Name	GPR37L1
Alternative Names	GPR37L1; ETBRLP2; Endothelin B receptor-like protein 2; ETBR-LP-2; G-protein coupled receptor 37-like 1
Gene ID	9283.0
SwissProt ID	O60883.The antiserum was produced against synthesized peptide derived from human ETBR2. AA range:1-50

Application

Dilution Ratio	WB 1:500 - 1:2000. IHC 1:100 - 1:300. IF 1:200 - 1:1000. ELISA: 1:10000. Not yet tested in other applications.
Molecular Weight	52kD

Product Name: GPR37L1 Rabbit Polyclonal Antibody
Catalog #: APRab11679

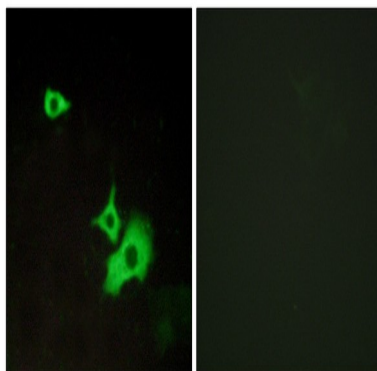


Background

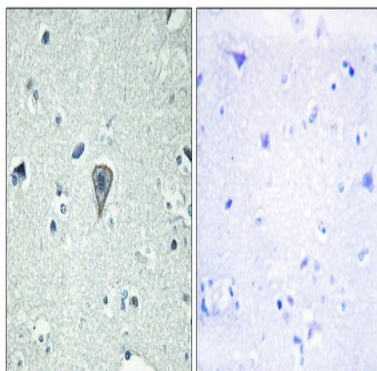
function:Orphan receptor.,similarity:Belongs to the G-protein coupled receptor 1 family.,tissue specificity:Expressed in the central nervous system.,function:Orphan receptor.,similarity:Belongs to the G-protein coupled receptor 1 family.,tissue specificity:Expressed in the central nervous system.,

Research Area

Image Data

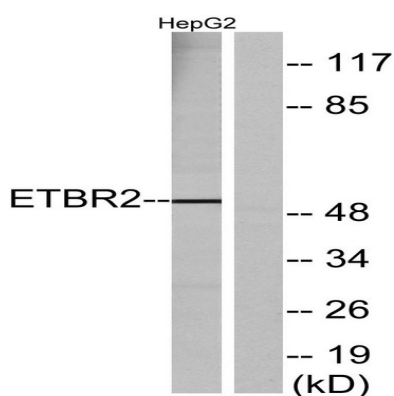


Immunofluorescence analysis of LOVO cells, using ETBR2 Antibody. The picture on the right is blocked with the synthesized peptide.



Immunohistochemistry analysis of paraffin-embedded human brain tissue, using ETBR2 Antibody. The picture on the right is blocked with the synthesized peptide.

Product Name: GPR37L1 Rabbit Polyclonal Antibody
Catalog #: APRab11679



Western blot analysis of lysates from HepG2 cells, using ETBR2 Antibody. The lane on the right is blocked with the synthesized peptide.

Note

For research use only.