

Product Name: GPR22 Rabbit Polyclonal Antibody
Catalog #: APRab11668



Summary

Production Name	GPR22 Rabbit Polyclonal Antibody
Description	Rabbit Polyclonal Antibody
Host	Rabbit
Application	IF,ELISA
Reactivity	Human,Mouse

Performance

Conjugation	Unconjugated
Modification	Unmodified
Isotype	IgG
Clonality	Polyclonal
Form	Liquid
Storage	Store at 4°C short term. Aliquot and store at -20°C long term. Avoid freeze/thaw cycles.
Buffer	Liquid in PBS containing 50% glycerol, 0.5% BSA and 0.02% New type preservative N.
Purification	Affinity purification

Immunogen

Gene Name	GPR22
Alternative Names	GPR22; Probable G-protein coupled receptor 22
Gene ID	2845.0
SwissProt ID	Q99680.The antiserum was produced against synthesized peptide derived from human GPR22. AA range:271-320

Application

Dilution Ratio	IF 1:200-1:1000. ELISA: 1:5000.
Molecular Weight	

Background

This gene is a member of the G-protein coupled receptor 1 family and encodes a multi-pass membrane protein. [provided

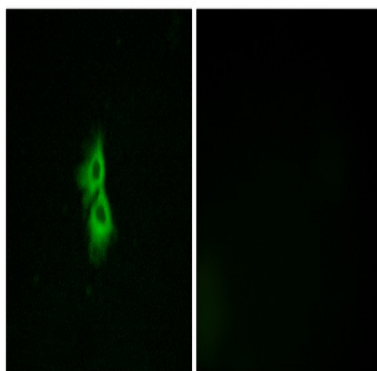
Product Name: GPR22 Rabbit Polyclonal Antibody
Catalog #: APRab11668



by RefSeq, Jul 2008],function:Orphan receptor.,similarity:Belongs to the G-protein coupled receptor 1 family.,tissue specificity:In the brain regions frontal cortex, caudate, putamen and thalamus; not in pons, hypothalamus and hippocampus.,

Research Area

Image Data



Immunofluorescence analysis of MCF7 cells, using GPR22 Antibody. The picture on the right is blocked with the synthesized peptide.

Note

For research use only.