

**Product Name: GPR18 Rabbit Polyclonal Antibody**  
**Catalog #: APRab11663**



## Summary

<b>Production Name</b>	GPR18 Rabbit Polyclonal Antibody
<b>Description</b>	Rabbit Polyclonal Antibody
<b>Host</b>	Rabbit
<b>Application</b>	IF, WB, ELISA
<b>Reactivity</b>	Human, Mouse, Rat

## Performance

<b>Conjugation</b>	Unconjugated
<b>Modification</b>	Unmodified
<b>Isotype</b>	IgG
<b>Clonality</b>	Polyclonal
<b>Form</b>	Liquid
<b>Storage</b>	Store at 4°C short term. Aliquot and store at -20°C long term. Avoid freeze/thaw cycles.
<b>Buffer</b>	Liquid in PBS containing 50% glycerol, 0.5% BSA and 0.02% New type preservative N.
<b>Purification</b>	Affinity purification

## Immunogen

<b>Gene Name</b>	GPR18
<b>Alternative Names</b>	GPR18; GPCRW; N-arachidonyl glycine receptor; NAGly receptor; G-protein coupled receptor 18
<b>Gene ID</b>	2841.0
<b>SwissProt ID</b>	Q14330. The antiserum was produced against synthesized peptide derived from human GPR18. AA range: 191-240

## Application

<b>Dilution Ratio</b>	WB 1:500 - 1:2000. IF 1:200 - 1:1000. ELISA: 1:5000. Not yet tested in other applications.
<b>Molecular Weight</b>	34kD

**Product Name: GPR18 Rabbit Polyclonal Antibody**  
**Catalog #: AP Rab11663**

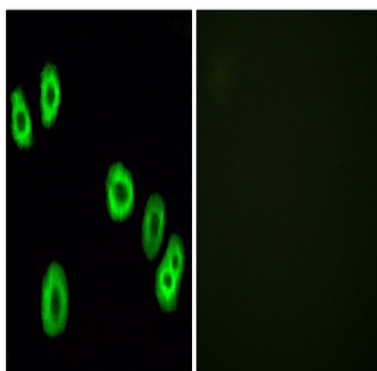


## Background

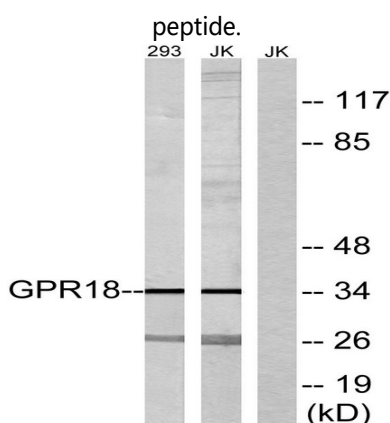
function: Receptor for N-arachidonyl glycine. The activity of this receptor is mediated by G proteins which inhibit adenylyl cyclase. May contribute to regulation of the immune system., similarity: Belongs to the G-protein coupled receptor 1 family., tissue specificity: Most abundant in testis and spleen. Highly expressed in CD4 and CD8-positive T-cells as well as CD19-positive B-cells., function: Receptor for N-arachidonyl glycine. The activity of this receptor is mediated by G proteins which inhibit adenylyl cyclase. May contribute to regulation of the immune system., similarity: Belongs to the G-protein coupled receptor 1 family., tissue specificity: Most abundant in testis and spleen. Highly expressed in CD4 and CD8-positive T-cells as well as CD19-positive B-cells.,

## Research Area

## Image Data



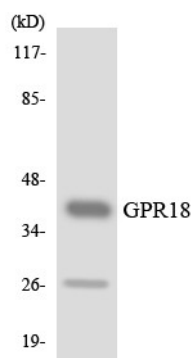
Immunofluorescence analysis of HUVEC cells, using GPR18 Antibody. The picture on the right is blocked with the synthesized



Western blot analysis of lysates from 293 and Jurkat cells, using GPR18 Antibody. The lane on the right is blocked with the synthesized peptide.

**Product Name: GPR18 Rabbit Polyclonal Antibody**  
**Catalog #: APRab11663**

---



Western blot analysis of the lysates from HUVECcells using GPR18 antibody.

### **Note**

For research use only.