

Product Name: GPR176 Rabbit Polyclonal Antibody
Catalog #: AP Rab11662



Summary

Production Name	GPR176 Rabbit Polyclonal Antibody
Description	Rabbit Polyclonal Antibody
Host	Rabbit
Application	IF, WB,
Reactivity	Human, Mouse, Rat

Performance

Conjugation	Unconjugated
Modification	Unmodified
Isotype	IgG
Clonality	Polyclonal
Form	Liquid
Storage	Store at 4°C short term. Aliquot and store at -20°C long term. Avoid freeze/thaw cycles.
Buffer	Liquid in PBS containing 50% glycerol, 0.5% BSA and 0.02% New type preservative N.
Purification	Affinity purification

Immunogen

Gene Name	GPR176
Alternative Names	GPR176; Probable G-protein coupled receptor 176; HB-954
Gene ID	11245.0
SwissProt ID	Q14439. The antiserum was produced against synthesized peptide derived from human GPR176. AA range: 466-515

Application

Dilution Ratio	WB 1:500 - 1:2000. IF 1:200 - 1:1000. ELISA: 1:10000. Not yet tested in other applications.
Molecular Weight	57kD

Product Name: GPR176 Rabbit Polyclonal Antibody
Catalog #: AP Rab11662

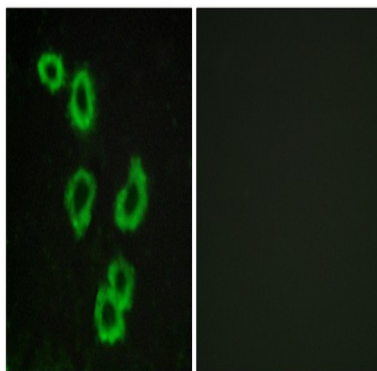


Background

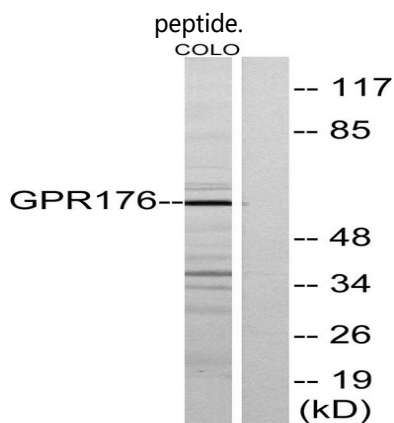
Members of the G protein-coupled receptor family, such as GPR176, are cell surface receptors involved in responses to hormones, growth factors, and neurotransmitters (Hata et al., 1995 [PubMed 7893747]).[supplied by OMIM, Jul 2008],function:Orphan receptor.,similarity:Belongs to the G-protein coupled receptor 1 family.,

Research Area

Image Data

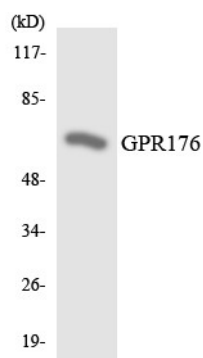


Immunofluorescence analysis of MCF7 cells, using GPR176 Antibody. The picture on the right is blocked with the synthesized

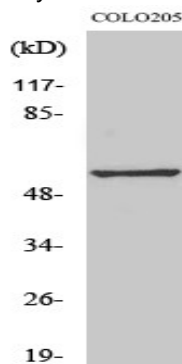


Western blot analysis of lysates from COLO205 cells, using GPR176 Antibody. The lane on the right is blocked with the synthesized peptide.

Product Name: GPR176 Rabbit Polyclonal Antibody
Catalog #: APRab11662



Western blot analysis of the lysates from HeLa cells using GPR176 antibody.



Western Blot analysis of various cells using GPR176 Polyclonal Antibody

Note

For research use only.