

---

## Summary

<b>Production Name</b>	GPR152 Rabbit Polyclonal Antibody
<b>Description</b>	Rabbit Polyclonal Antibody
<b>Host</b>	Rabbit
<b>Application</b>	WB,ELISA
<b>Reactivity</b>	Human,Rat,Mouse

## Performance

<b>Conjugation</b>	Unconjugated
<b>Modification</b>	Unmodified
<b>Isotype</b>	IgG
<b>Clonality</b>	Polyclonal
<b>Form</b>	Liquid
<b>Storage</b>	Store at 4°C short term. Aliquot and store at -20°C long term. Avoid freeze/thaw cycles.
<b>Buffer</b>	Liquid in PBS containing 50% glycerol, 0.5% BSA and 0.02% New type preservative N.
<b>Purification</b>	Affinity purification

## Immunogen

<b>Gene Name</b>	GPR152
<b>Alternative Names</b>	GPR152; PGR5; Probable G-protein coupled receptor 152; G-protein coupled receptor PGR5
<b>Gene ID</b>	390212.0
<b>SwissProt ID</b>	Q8TDT2.The antiserum was produced against synthesized peptide derived from human GPR152. AA range:10-59

## Application

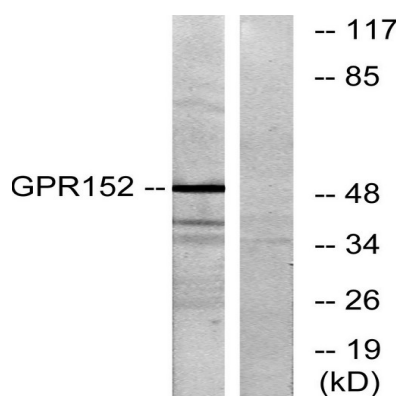
<b>Dilution Ratio</b>	WB 1:500 - 1:2000. ELISA: 1:20000. Not yet tested in other applications.
<b>Molecular Weight</b>	51kD

## Background

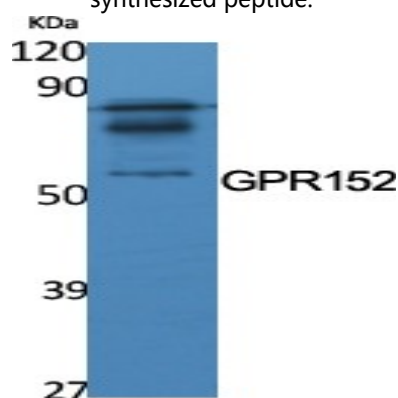
function:Orphan receptor.,similarity:Belongs to the G-protein coupled receptor 1 family.,function:Orphan receptor.,similarity:Belongs to the G-protein coupled receptor 1 family.,

## Research Area

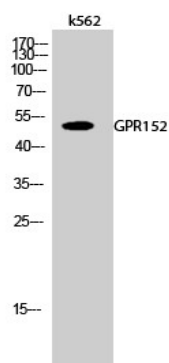
## Image Data



Western blot analysis of lysates from Jurkat cells, using GPR152 Antibody. The lane on the right is blocked with the synthesized peptide.



Western Blot analysis of various cells using GPR152 Polyclonal Antibody



**Product Name: GPR152 Rabbit Polyclonal Antibody**  
**Catalog #: APRab11649**



---

Western Blot analysis of k562 cells using GPR152 Polyclonal Antibody

**Note**

For research use only.