

**Product Name: GPR146 Rabbit Polyclonal Antibody**  
**Catalog #: APRab11644**



## Summary

<b>Production Name</b>	GPR146 Rabbit Polyclonal Antibody
<b>Description</b>	Rabbit Polyclonal Antibody
<b>Host</b>	Rabbit
<b>Application</b>	WB,ELISA
<b>Reactivity</b>	Human,Rat,Mouse

## Performance

<b>Conjugation</b>	Unconjugated
<b>Modification</b>	Unmodified
<b>Isotype</b>	IgG
<b>Clonality</b>	Polyclonal
<b>Form</b>	Liquid
<b>Storage</b>	Store at 4°C short term. Aliquot and store at -20°C long term. Avoid freeze/thaw cycles.
<b>Buffer</b>	Liquid in PBS containing 50% glycerol, 0.5% BSA and 0.02% New type preservative N.
<b>Purification</b>	Affinity purification

## Immunogen

<b>Gene Name</b>	GPR146
<b>Alternative Names</b>	GPR146; PGR8; Probable G-protein coupled receptor 146; G-protein coupled receptor PGR8
<b>Gene ID</b>	115330.0
<b>SwissProt ID</b>	Q96CH1.The antiserum was produced against synthesized peptide derived from human GPR146. AA range:191-240

## Application

<b>Dilution Ratio</b>	WB 1:500 - 1:2000. ELISA: 1:5000
<b>Molecular Weight</b>	30kD

**Product Name: GPR146 Rabbit Polyclonal Antibody**  
**Catalog #: AP Rab11644**

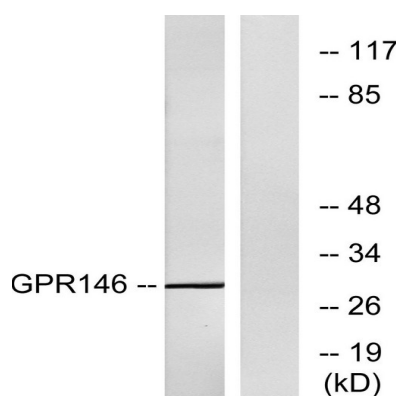


## Background

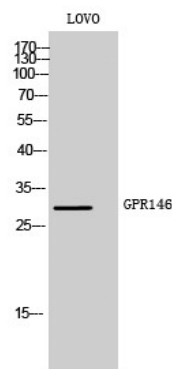
function:Orphan receptor.,similarity:Belongs to the G-protein coupled receptor 1 family.,function:Orphan receptor.,similarity:Belongs to the G-protein coupled receptor 1 family.,

## Research Area

## Image Data



Western blot analysis of lysates from LOVO cells, using GPR146 Antibody. The lane on the right is blocked with the synthesized peptide.



Western Blot analysis of LOVO cells using GPR146 Polyclonal Antibody

## Note

For research use only.