

Summary

Production Name	GPR142 Rabbit Polyclonal Antibody
Description	Rabbit Polyclonal Antibody
Host	Rabbit
Application	IF, WB, ELISA
Reactivity	Human, Rat, Mouse

Performance

Conjugation	Unconjugated
Modification	Unmodified
Isotype	IgG
Clonality	Polyclonal
Form	Liquid
Storage	Store at 4°C short term. Aliquot and store at -20°C long term. Avoid freeze/thaw cycles.
Buffer	Liquid in PBS containing 50% glycerol, 0.5% BSA and 0.02% New type preservative N.
Purification	Affinity purification

Immunogen

Gene Name	GPR142
Alternative Names	GPR142; PGR2; Probable G-protein coupled receptor 142; G-protein coupled receptor PGR2
Gene ID	350383.0
SwissProt ID	Q7Z601. The antiserum was produced against synthesized peptide derived from human GPR142. AA range:1-50

Application

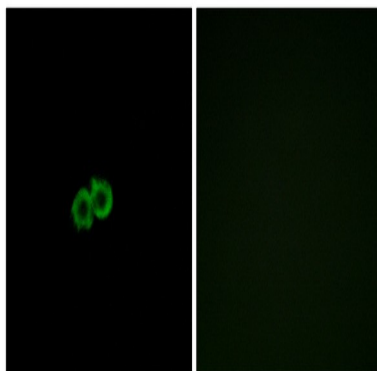
Dilution Ratio	WB 1:500 - 1:2000. IF 1:200 - 1:1000. ELISA: 1:10000. Not yet tested in other applications.
Molecular Weight	51kD

Background

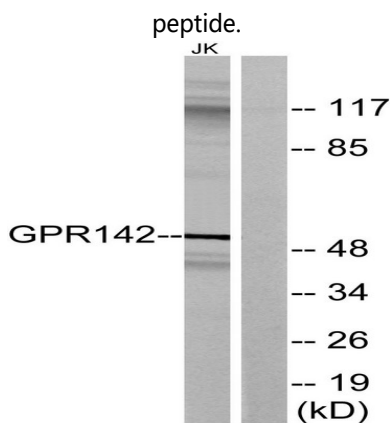
GPR142 is a member of the rhodopsin family of G protein-coupled receptors (GPRs) (Fredriksson et al., 2003 [PubMed 14623098]).[supplied by OMIM, Mar 2008],function:Orphan receptor.,similarity:Belongs to the G-protein coupled receptor 1 family.,tissue specificity:Exclusively expressed in the central nervous system, most abundantly in the ventrolateral region of caudate putamen, the habenular nucleus, the zona incerta, and the medial mammillary nucleus.,

Research Area

Image Data

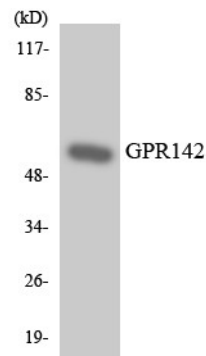


Immunofluorescence analysis of A549 cells, using GPR142 Antibody. The picture on the right is blocked with the synthesized



Western blot analysis of lysates from Jurkat cells, using GPR142 Antibody. The lane on the right is blocked with the synthesized peptide.

Product Name: GPR142 Rabbit Polyclonal Antibody
Catalog #: APRab11641



Western blot analysis of the lysates from HeLa cells using GPR142 antibody.

Note

For research use only.