

Product Name: GPR135 Rabbit Polyclonal Antibody
Catalog #: AP Rab11638



Summary

Production Name	GPR135 Rabbit Polyclonal Antibody
Description	Rabbit Polyclonal Antibody
Host	Rabbit
Application	WB
Reactivity	Human,Mouse,Rat

Performance

Conjugation	Unconjugated
Modification	Unmodified
Isotype	IgG
Clonality	Polyclonal
Form	Liquid
Storage	Store at 4°C short term. Aliquot and store at -20°C long term. Avoid freeze/thaw cycles.
Buffer	Liquid in PBS containing 50% glycerol, 0.5% BSA and 0.02% New type preservative N.
Purification	Affinity purification

Immunogen

Gene Name	GPR135
Alternative Names	GPR135; Probable G-protein coupled receptor 135
Gene ID	64582.0
SwissProt ID	Q8IZ08.The antiserum was produced against synthesized peptide derived from human GPR135. AA range:371-420

Application

Dilution Ratio	WB 1:500-1:2000. ELISA: 1:5000.
Molecular Weight	48kD

Background

function:Orphan receptor.,similarity:Belongs to the G-protein coupled receptor 1 family.,function:Orphan

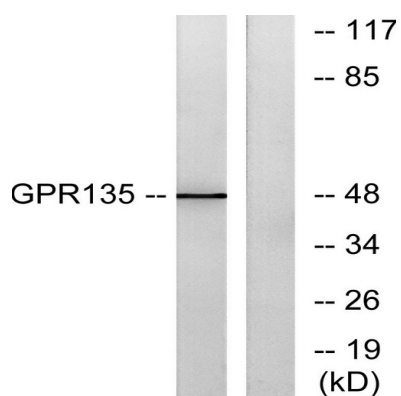
Product Name: GPR135 Rabbit Polyclonal Antibody
Catalog #: APRab11638



receptor.,similarity:Belongs to the G-protein coupled receptor 1 family.,

Research Area

Image Data



Western blot analysis of lysates from NIH/3T3 cells, using GPR135 Antibody. The lane on the right is blocked with the synthesized peptide.

Note

For research use only.