

---

## Summary

<b>Production Name</b>	GPR115 Rabbit Polyclonal Antibody
<b>Description</b>	Rabbit Polyclonal Antibody
<b>Host</b>	Rabbit
<b>Application</b>	IF, WB, ELISA
<b>Reactivity</b>	Human, Mouse

## Performance

<b>Conjugation</b>	Unconjugated
<b>Modification</b>	Unmodified
<b>Isotype</b>	IgG
<b>Clonality</b>	Polyclonal
<b>Form</b>	Liquid
<b>Storage</b>	Store at 4°C short term. Aliquot and store at -20°C long term. Avoid freeze/thaw cycles.
<b>Buffer</b>	Liquid in PBS containing 50% glycerol, 0.5% BSA and 0.02% New type preservative N.
<b>Purification</b>	Affinity purification

## Immunogen

<b>Gene Name</b>	GPR115
<b>Alternative Names</b>	GPR115; PGR18; Probable G-protein coupled receptor 115; G-protein coupled receptor PGR18
<b>Gene ID</b>	221393.0
<b>SwissProt ID</b>	Q8IZF3. The antiserum was produced against synthesized peptide derived from human GPR115. AA range:641-690

## Application

<b>Dilution Ratio</b>	WB 1:500 - 1:2000. IF 1:200 - 1:1000. ELISA: 1:10000. Not yet tested in other applications.
<b>Molecular Weight</b>	82kD

**Product Name: GPR115 Rabbit Polyclonal Antibody**  
**Catalog #: APRab11628**



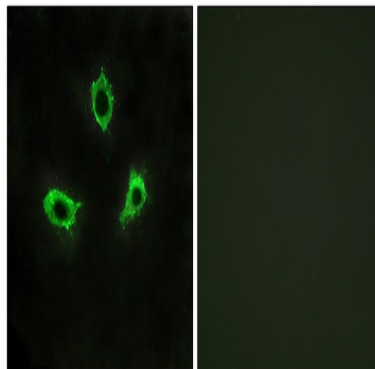
## Background

function:Orphan receptor.,similarity:Belongs to the G-protein coupled receptor 2 family. LN-TM7

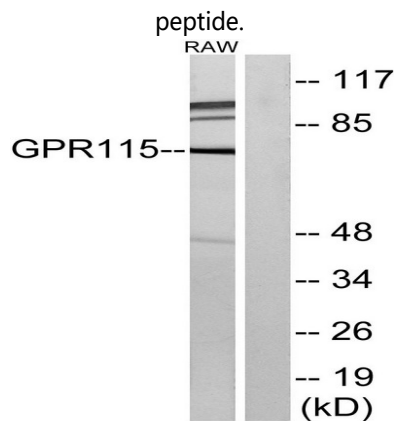
subfamily.,similarity:Contains 1 GPS domain.,function:Orphan receptor.,similarity:Belongs to the G-protein coupled receptor 2 family. LN-TM7 subfamily.,similarity:Contains 1 GPS domain.,

## Research Area

## Image Data

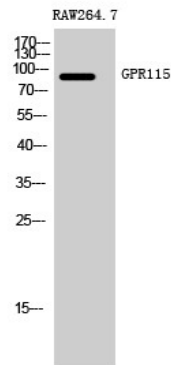


Immunofluorescence analysis of LOVO cells, using GPR115 Antibody. The picture on the right is blocked with the synthesized



Western blot analysis of lysates from RAW264.7 cells, using GPR115 Antibody. The lane on the right is blocked with the synthesized peptide.

**Product Name: GPR115 Rabbit Polyclonal Antibody**  
**Catalog #: APRab11628**



Western Blot analysis of RAW264.7 cells using GPR115 Polyclonal Antibody

**Note**

For research use only.