

Summary

Production Name	GPR114 Rabbit Polyclonal Antibody
Description	Rabbit Polyclonal Antibody
Host	Rabbit
Application	WB,ELISA
Reactivity	Human,Rat,Mouse

Performance

Conjugation	Unconjugated
Modification	Unmodified
Isotype	IgG
Clonality	Polyclonal
Form	Liquid
Storage	Store at 4°C short term. Aliquot and store at -20°C long term. Avoid freeze/thaw cycles.
Buffer	Liquid in PBS containing 50% glycerol, 0.5% BSA and 0.02% New type preservative N.
Purification	Affinity purification

Immunogen

Gene Name	GPR114
Alternative Names	GPR114; PGR27; Probable G-protein coupled receptor 114; G-protein coupled receptor PGR27
Gene ID	221188.0
SwissProt ID	Q8IZF4.The antiserum was produced against synthesized peptide derived from human GPR114. AA range:91-140

Application

Dilution Ratio	WB 1:500 - 1:2000. ELISA: 1:5000. Not yet tested in other applications.
Molecular Weight	59kD

Product Name: GPR114 Rabbit Polyclonal Antibody
Catalog #: AP Rab11627

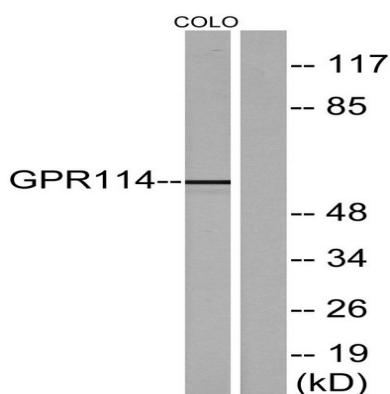


Background

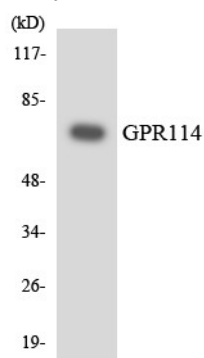
This gene encodes a member of the adhesion family of G-protein coupled receptors. Members of this family are characterized by long N-termini and multiple functional domains. They may play a role in the immune system as well as in the central nervous system. Alternative splicing results in multiple transcript variants. [provided by RefSeq, Jan 2016],function:Orphan receptor.,similarity:Belongs to the G-protein coupled receptor 2 family. LN-TM7 subfamily.,similarity:Contains 1 GPS domain.,

Research Area

Image Data

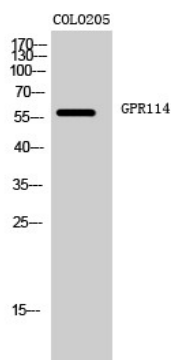


Western blot analysis of lysates from COLO205 cells, using GPR114 Antibody. The lane on the right is blocked with the synthesized peptide.



Western blot analysis of the lysates from 293 cells using GPR114 antibody.

Product Name: GPR114 Rabbit Polyclonal Antibody
Catalog #: APRab11627



Western Blot analysis of COLO205 cells using GPR114 Polyclonal Antibody

Note

For research use only.