

## Summary

<b>Production Name</b>	GPR108 Rabbit Polyclonal Antibody
<b>Description</b>	Rabbit Polyclonal Antibody
<b>Host</b>	Rabbit
<b>Application</b>	IF, WB,
<b>Reactivity</b>	Human, Rat, Mouse

## Performance

<b>Conjugation</b>	Unconjugated
<b>Modification</b>	Unmodified
<b>Isotype</b>	IgG
<b>Clonality</b>	Polyclonal
<b>Form</b>	Liquid
<b>Storage</b>	Store at 4°C short term. Aliquot and store at -20°C long term. Avoid freeze/thaw cycles.
<b>Buffer</b>	Liquid in PBS containing 50% glycerol, 0.5% BSA and 0.02% New type preservative N.
<b>Purification</b>	Affinity purification

## Immunogen

<b>Gene Name</b>	GPR108
<b>Alternative Names</b>	GPR108; LUSTR2; Protein GPR108; Lung seven transmembrane receptor 2
<b>Gene ID</b>	56927.0
<b>SwissProt ID</b>	Q9NPR9. The antiserum was produced against synthesized peptide derived from human GPR108. AA range: 155-204

## Application

<b>Dilution Ratio</b>	WB 1:500 - 1:2000. IF 1:200 - 1:1000. ELISA: 1:5000. Not yet tested in other applications.
<b>Molecular Weight</b>	60kD

**Product Name: GPR108 Rabbit Polyclonal Antibody**  
**Catalog #: AP Rab11624**

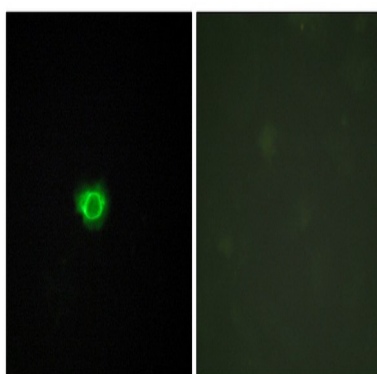


## Background

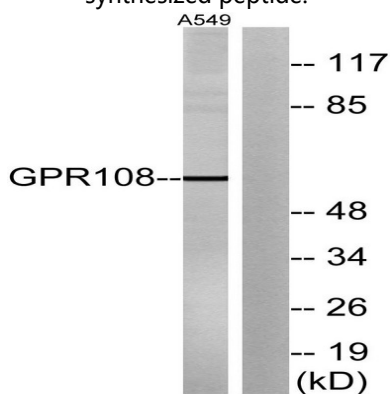
similarity:Belongs to the LU7TM family.,similarity:Belongs to the LU7TM family.,

## Research Area

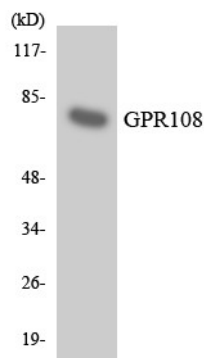
## Image Data



Immunofluorescence analysis of HUVEC cells, using GPR108 Antibody. The picture on the right is blocked with the synthesized peptide.



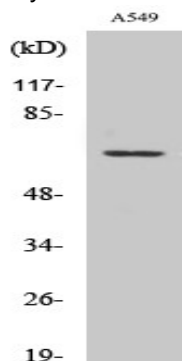
Western blot analysis of lysates from A549 cells, using GPR108 Antibody. The lane on the right is blocked with the synthesized peptide.



**Product Name: GPR108 Rabbit Polyclonal Antibody**  
**Catalog #: APRab11624**



Western blot analysis of the lysates from HT-29 cells using GPR108 antibody.



Western Blot analysis of various cells using GPR108 Polyclonal Antibody

### Note

For research use only.