

Product Name: GPR101 Rabbit Polyclonal Antibody
Catalog #: AP Rab11620



Summary

Production Name	GPR101 Rabbit Polyclonal Antibody
Description	Rabbit Polyclonal Antibody
Host	Rabbit
Application	IF, WB, ELISA
Reactivity	Human, Mouse, Monkey

Performance

Conjugation	Unconjugated
Modification	Unmodified
Isotype	IgG
Clonality	Polyclonal
Form	Liquid
Storage	Store at 4°C short term. Aliquot and store at -20°C long term. Avoid freeze/thaw cycles.
Buffer	Liquid in PBS containing 50% glycerol, 0.5% BSA and 0.02% New type preservative N.
Purification	Affinity purification

Immunogen

Gene Name	GPR101
Alternative Names	GPR101; Probable G-protein coupled receptor 101
Gene ID	83550.0
SwissProt ID	Q96P66. The antiserum was produced against synthesized peptide derived from human GPR101. AA range: 451-500

Application

Dilution Ratio	WB 1:500 - 1:2000. IF 1:200 - 1:1000. ELISA: 1:5000. Not yet tested in other applications.
Molecular Weight	60kD

Background

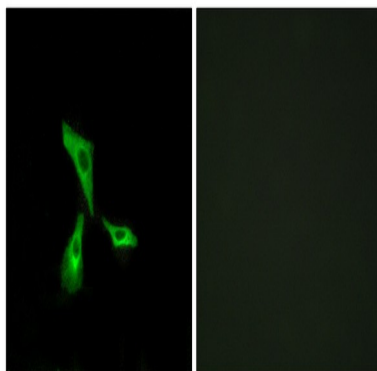
Product Name: GPR101 Rabbit Polyclonal Antibody
Catalog #: AP Rab11620



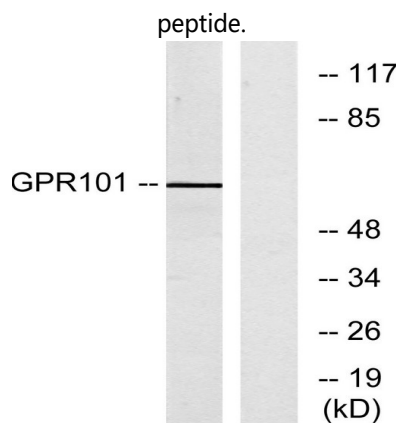
The protein encoded by this gene is an orphan G protein-coupled receptor of unknown function. The encoded protein is a member of a family of proteins that contain seven transmembrane domains and transduce extracellular signals through heterotrimeric G proteins. [provided by RefSeq, Sep 2011],function:Orphan receptor.,similarity:Belongs to the G-protein coupled receptor 1 family.,

Research Area

Image Data

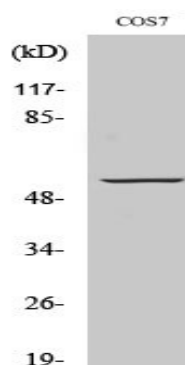


Immunofluorescence analysis of HeLa cells, using GPR101 Antibody. The picture on the right is blocked with the synthesized



Western blot analysis of lysates from COS7 cells, using GPR101 Antibody. The lane on the right is blocked with the synthesized peptide.

Product Name: GPR101 Rabbit Polyclonal Antibody
Catalog #: APRab11620



Western Blot analysis of various cells using GPR101 Polyclonal Antibody diluted at 1: 500

Note

For research use only.