

Product Name: GPR1 Rabbit Polyclonal Antibody
Catalog #: APRab11617



Summary

| | |
|------------------------|---------------------------------|
| Production Name | GPR1 Rabbit Polyclonal Antibody |
| Description | Rabbit Polyclonal Antibody |
| Host | Rabbit |
| Application | IF,ELISA |
| Reactivity | Human,Mouse,Rat |

Performance

| | |
|---------------------|--|
| Conjugation | Unconjugated |
| Modification | Unmodified |
| Isotype | IgG |
| Clonality | Polyclonal |
| Form | Liquid |
| Storage | Store at 4°C short term. Aliquot and store at -20°C long term. Avoid freeze/thaw cycles. |
| Buffer | Liquid in PBS containing 50% glycerol, 0.5% BSA and 0.02% New type preservative N. |
| Purification | Affinity purification |

Immunogen

| | |
|--------------------------|---|
| Gene Name | GPR1 |
| Alternative Names | GPR1; G-protein coupled receptor 1 |
| Gene ID | 2825.0 |
| SwissProt ID | P46091.The antiserum was produced against synthesized peptide derived from human GPR1. AA range:121-170 |

Application

| | |
|-------------------------|---------------------------------|
| Dilution Ratio | IF 1:200-1:1000. ELISA: 1:5000. |
| Molecular Weight | |

Background

function:Orphan receptor. Probable opioid receptor. Can act as a co-receptor for HIV-1.,similarity:Belongs to the G-protein

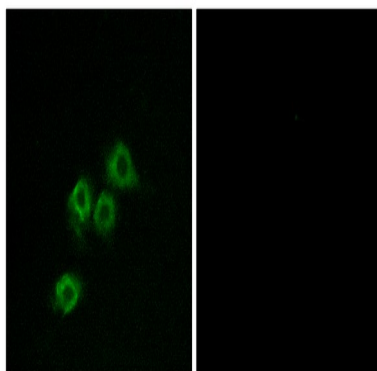
Product Name: GPR1 Rabbit Polyclonal Antibody
Catalog #: APRab11617



coupled receptor 1 family.,tissue specificity:Expressed in hippocampus.,function:Orphan receptor. Probable opioid receptor. Can act as a co-receptor for HIV-1.,similarity:Belongs to the G-protein coupled receptor 1 family.,tissue specificity:Expressed in hippocampus.,

Research Area

Image Data



Immunofluorescence analysis of MCF7 cells, using GPR1 Antibody. The picture on the right is blocked with the synthesized peptide.

Note

For research use only.