

Product Name: GNG4 Rabbit Polyclonal Antibody
Catalog #: APRab11557



Summary

Production Name	GNG4 Rabbit Polyclonal Antibody
Description	Rabbit Polyclonal Antibody
Host	Rabbit
Application	WB,ELISA
Reactivity	Human,Mouse

Performance

Conjugation	Unconjugated
Modification	Unmodified
Isotype	IgG
Clonality	Polyclonal
Form	Liquid
Storage	Store at 4°C short term. Aliquot and store at -20°C long term. Avoid freeze/thaw cycles.
Buffer	Liquid in PBS containing 50% glycerol, 0.5% BSA and 0.02% New type preservative N.
Purification	Affinity purification

Immunogen

Gene Name	GNG4 GNGT4
Alternative Names	Guanine nucleotide-binding protein G(I)/G(S)/G(O) subunit gamma-4
Gene ID	2786.0
SwissProt ID	P50150.Synthesized peptide derived from human GNG4 AA range: 1-50

Application

Dilution Ratio	IHC 1:50-200 ELISA(peptide)1:5000-20000
Molecular Weight	

Background

function:Guanine nucleotide-binding proteins (G proteins) are involved as a modulator or transducer in various transmembrane signaling systems. The beta and gamma chains are required for the GTPase activity, for replacement of

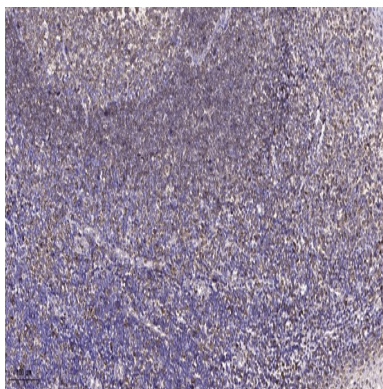
Product Name: GNG4 Rabbit Polyclonal Antibody
Catalog #: APRab11557



GDP by GTP, and for G protein-effector interaction.,similarity:Belongs to the G protein gamma family.,subunit:G proteins are composed of 3 units, alpha, beta and gamma. Interacts with beta-1 and beta-2, but not with beta-3.,tissue specificity:Brain, kidney, pancreas, skeletal muscle and faintly in cardiac muscle.,function:Guanine nucleotide-binding proteins (G proteins) are involved as a modulator or transducer in various transmembrane signaling systems. The beta and gamma chains are required for the GTPase activity, for replacement of GDP by GTP, and for G protein-effector interaction.,similarity:Belongs to the G protein gamma family.,subunit:G proteins are composed of 3 units, alpha, beta and gamma. Interacts with beta-1 and beta-2, but not with beta-3.,tissue specificity:Brain, kidney, pancreas, skeletal muscle and faintly in cardiac muscle.,

Research Area

Image Data



Immunohistochemical analysis of paraffin-embedded human tonsil. 1, Antibody was diluted at 1:200 (4° overnight) . 2, Tris-EDTA,pH9.0 was used for antigen retrieval. 3,Secondary antibody was diluted at 1:200 (room temperature, 45min) .

Note

For research use only.