

Summary

Production Name	GMF- β Rabbit Polyclonal Antibody
Description	Rabbit Polyclonal Antibody
Host	Rabbit
Application	WB,IHC,ELISA
Reactivity	Human,Mouse,Rat

Performance

Conjugation	Unconjugated
Modification	Unmodified
Isotype	IgG
Clonality	Polyclonal
Form	Liquid
Storage	Store at 4°C short term. Aliquot and store at -20°C long term. Avoid freeze/thaw cycles.
Buffer	Liquid in PBS containing 50% glycerol, 0.5% BSA and 0.02% New type preservative N.
Purification	Affinity purification

Immunogen

Gene Name	GMFB
Alternative Names	GMFB; Glia maturation factor beta; GMF-beta
Gene ID	2764.0
SwissProt ID	P60983.The antiserum was produced against synthesized peptide derived from the Internal region of human GMFB. AA range:1-50

Application

Dilution Ratio	WB 1:500 - 1:2000. IHC-p: 1:100-1:300. ELISA: 1:20000..
Molecular Weight	17kD

Background

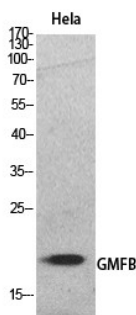
Product Name: GMF- β Rabbit Polyclonal Antibody
Catalog #: APRab11533



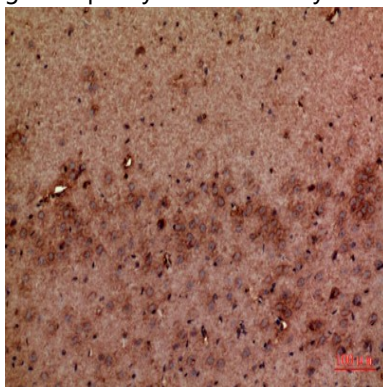
function: This protein causes differentiation of brain cells, stimulation of neural regeneration, and inhibition of proliferation of tumor cells., PTM: Phosphorylated; stimulated by phorbol ester., similarity: Belongs to the actin-binding proteins ADF family. GMF subfamily., similarity: Contains 1 ADF-H domain., function: This protein causes differentiation of brain cells, stimulation of neural regeneration, and inhibition of proliferation of tumor cells., PTM: Phosphorylated; stimulated by phorbol ester., similarity: Belongs to the actin-binding proteins ADF family. GMF subfamily., similarity: Contains 1 ADF-H domain.,

Research Area

Image Data



Western Blot analysis of HeLa cells using GMF- β Polyclonal Antibody.. Secondary antibody was diluted at 1:20000



Immunohistochemical analysis of paraffin-embedded mouse-brain, antibody was diluted at 1:100

Note

For research use only.