

## Summary

<b>Production Name</b>	GM-CSF Rabbit Polyclonal Antibody
<b>Description</b>	Rabbit Polyclonal Antibody
<b>Host</b>	Rabbit
<b>Application</b>	IHC,ELISA
<b>Reactivity</b>	Human,Rat,Mouse

## Performance

<b>Conjugation</b>	Unconjugated
<b>Modification</b>	Unmodified
<b>Isotype</b>	IgG
<b>Clonality</b>	Polyclonal
<b>Form</b>	Liquid
<b>Storage</b>	Store at 4°C short term. Aliquot and store at -20°C long term. Avoid freeze/thaw cycles.
<b>Buffer</b>	Liquid in PBS containing 50% glycerol, 0.5% BSA and 0.02% New type preservative N.
<b>Purification</b>	Affinity purification

## Immunogen

<b>Gene Name</b>	CSF2 GMCSF
<b>Alternative Names</b>	Granulocyte-macrophage colony-stimulating factor (GM-CSF;Colony-stimulating factor;CSF;Molgramostin;Sargramostim)
<b>Gene ID</b>	1437.0
<b>SwissProt ID</b>	P04141.Synthetic peptide from human protein at AA range: 100-144

## Application

<b>Dilution Ratio</b>	IHC-p 1:50-200, ELISA 1:10000-20000.
<b>Molecular Weight</b>	

## Background

**Product Name: GM-CSF Rabbit Polyclonal Antibody**  
**Catalog #: APRab11531**

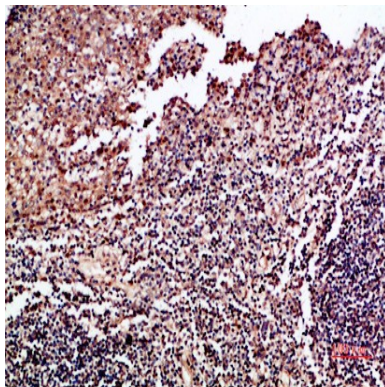


The protein encoded by this gene is a cytokine that controls the production, differentiation, and function of granulocytes and macrophages. The active form of the protein is found extracellularly as a homodimer. This gene has been localized to a cluster of related genes at chromosome region 5q31, which is known to be associated with interstitial deletions in the 5q-syndrome and acute myelogenous leukemia. Other genes in the cluster include those encoding interleukins 4, 5, and 13. [provided by RefSeq, Jul 2008],function:Cytokine that stimulates the growth and differentiation of hematopoietic precursor cells from various lineages, including granulocytes, macrophages, eosinophils and erythrocytes.,online information:Clinical information on Leukine,pharmaceutical:Available under the names Leukine (Immunex) and Leucomax (Novartis). Used in myeloid reconstitution following bone marrow transplant, bone marrow transplant engraftment failure or delay, mobilization and following transplantation of autologous peripheral blood progenitor cells, and following induction chemotherapy in older adults with acute myelogenous leukemia.,polymorphism:Variant Ile-117 may be a risk factor for atopic asthma.,similarity:Belongs to the GM-CSF family.,subunit:Monomer.,

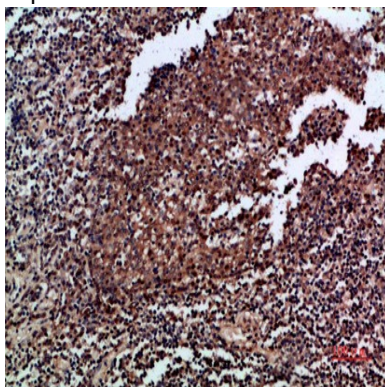
## Research Area

Cytokine-cytokine receptor interaction;Jak\_STAT;Hematopoietic cell lineage;Natural killer cell mediated cytotoxicity;T\_Cell\_Receptor;Fc epsilon RI;

## Image Data



Immunohistochemical analysis of paraffin-embedded human-tonsil, antibody was diluted at 1:200



Immunohistochemical analysis of paraffin-embedded human-tonsil, antibody was diluted at 1:200

**Product Name: GM-CSF Rabbit Polyclonal Antibody**  
**Catalog #: APRab11531**

---



**Note**

For research use only.