

**Product Name: Glypican-2 Rabbit Polyclonal Antibody**  
**Catalog #: AP Rab11521**



## Summary

<b>Production Name</b>	Glypican-2 Rabbit Polyclonal Antibody
<b>Description</b>	Rabbit Polyclonal Antibody
<b>Host</b>	Rabbit
<b>Application</b>	IHC,ELISA
<b>Reactivity</b>	Human,Rat,Mouse

## Performance

<b>Conjugation</b>	Unconjugated
<b>Modification</b>	Unmodified
<b>Isotype</b>	IgG
<b>Clonality</b>	Polyclonal
<b>Form</b>	Liquid
<b>Storage</b>	Store at 4°C short term. Aliquot and store at -20°C long term. Avoid freeze/thaw cycles.
<b>Buffer</b>	Liquid in PBS containing 50% glycerol, 0.5% BSA and 0.02% New type preservative N.
<b>Purification</b>	Affinity purification

## Immunogen

<b>Gene Name</b>	GPC2
<b>Alternative Names</b>	Glypican-2 [Cleaved into: Secreted glypican-2]
<b>Gene ID</b>	221914.0
<b>SwissProt ID</b>	Q8N158.Synthesized peptide derived from human Glypican-2

## Application

<b>Dilution Ratio</b>	IHC 1:50-200
<b>Molecular Weight</b>	65kD

## Background

function:Cell surface proteoglycan that bears heparan sulfate. May fulfill a function related to the motile behaviors of developing neurons.,similarity:Belongs to the glypican family.,function:Cell surface proteoglycan that bears heparan sulfate.

**Product Name: Glypican-2 Rabbit Polyclonal Antibody**  
**Catalog #: APRab11521**

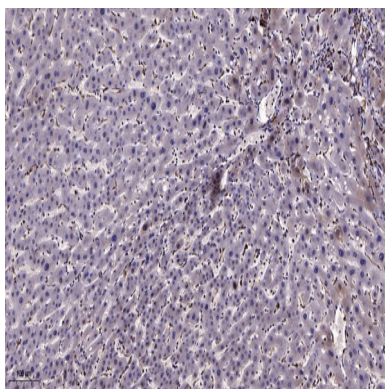
---



May fulfill a function related to the motile behaviors of developing neurons.,similarity:Belongs to the glypican family.,

## Research Area

## Image Data



Immunohistochemical analysis of paraffin-embedded human liver cancer. 1, Antibody was diluted at 1:200 (4° overnight) .  
2, Tris-EDTA,pH9.0 was used for antigen retrieval. 3,Secondary antibody was diluted at 1:200 (room temperature, 45min) .

## Note

For research use only.