

Product Name: Glutaredoxin-1 Rabbit Polyclonal Antibody
Catalog #: APRab11508

Summary

| | |
|------------------------|-------------------------------------------|
| Production Name | Glutaredoxin-1 Rabbit Polyclonal Antibody |
| Description | Rabbit Polyclonal Antibody |
| Host | Rabbit |
| Application | IHC,ELISA |
| Reactivity | Human,Rat,Mouse |

Performance

| | |
|---------------------|------------------------------------------------------------------------------------------|
| Conjugation | Unconjugated |
| Modification | Unmodified |
| Isotype | IgG |
| Clonality | Polyclonal |
| Form | Liquid |
| Storage | Store at 4°C short term. Aliquot and store at -20°C long term. Avoid freeze/thaw cycles. |
| Buffer | Liquid in PBS containing 50% glycerol, 0.5% BSA and 0.02% New type preservative N. |
| Purification | Affinity purification |

Immunogen

| | |
|--------------------------|-----------------------------------------------------------------------------|
| Gene Name | GLRX GRX |
| Alternative Names | Glutaredoxin-1 (Thioltransferase-1;TTase-1) |
| Gene ID | 2745.0 |
| SwissProt ID | P35754.Synthesized peptide derived from human Glutaredoxin-1 AA range: 8-58 |

Application

| | |
|-------------------------|-------------------------------|
| Dilution Ratio | IHC 1:100-1:300 ELISA: 1:5000 |
| Molecular Weight | |

Background

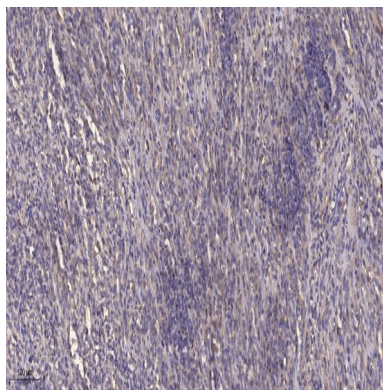
This gene encodes a member of the glutaredoxin family. The encoded protein is a cytoplasmic enzyme catalyzing the

Product Name: Glutaredoxin-1 Rabbit Polyclonal Antibody
Catalog #: APRab11508

reversible reduction of glutathione-protein mixed disulfides. This enzyme highly contributes to the antioxidant defense system. It is crucial for several signalling pathways by controlling the S-glutathionylation status of signalling mediators. It is involved in beta-amyloid toxicity and Alzheimer's disease. Multiple alternatively spliced transcript variants encoding the same protein have been identified. [provided by RefSeq, Aug 2011],function:Has a glutathione-disulfide oxidoreductase activity in the presence of NADPH and glutathione reductase. Reduces low molecular weight disulfides and proteins.,similarity:Belongs to the glutaredoxin family.,similarity:Contains 1 glutaredoxin domain.,

Research Area

Image Data



Immunohistochemical analysis of paraffin-embedded human Colon cancer. 1, Antibody was diluted at 1:200 (4° overnight) .
2, Tris-EDTA,pH9.0 was used for antigen retrieval. 3,Secondary antibody was diluted at 1:200 (room temperature, 45min) .

Note

For research use only.