

Summary

Production Name	Glut5 Rabbit Polyclonal Antibody
Description	Rabbit Polyclonal Antibody
Host	Rabbit
Application	WB,ELISA
Reactivity	Human,Rat,Mouse

Performance

Conjugation	Unconjugated
Modification	Unmodified
Isotype	IgG
Clonality	Polyclonal
Form	Liquid
Storage	Store at 4°C short term. Aliquot and store at -20°C long term. Avoid freeze/thaw cycles.
Buffer	Liquid in PBS containing 50% glycerol, 0.5% BSA and 0.02% New type preservative N.
Purification	Affinity purification

Immunogen

Gene Name	SLC2A5
Alternative Names	SLC2A5; GLUT5; Solute carrier family 2, facilitated glucose transporter member 5; Fructose transporter; Glucose transporter type 5, small intestine; GLUT-5
Gene ID	6518.0
SwissProt ID	P22732.The antiserum was produced against synthesized peptide derived from the N-terminal region of human SLC2A5. AA range:31-80

Application

Dilution Ratio	WB 1:500 - 1:2000. ELISA: 1:20000
Molecular Weight	55kD

Product Name: Glut5 Rabbit Polyclonal Antibody
Catalog #: APRab11505

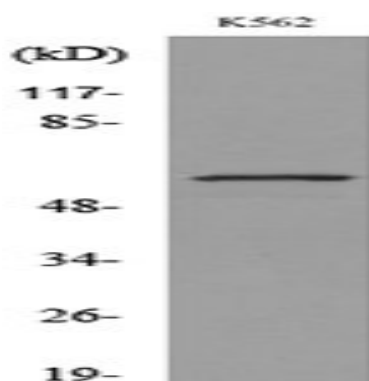


Background

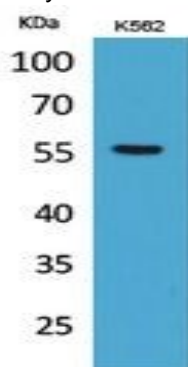
The protein encoded by this gene is a fructose transporter responsible for fructose uptake by the small intestine. The encoded protein also is necessary for the increase in blood pressure due to high dietary fructose consumption. [provided by RefSeq, Jun 2016],function:Cytochalasin B-sensitive carrier. Seems to function primarily as a fructose transporter.,induction:By forskolin (in Caco-2 cells),mass spectrometry: PubMed:11840567,similarity:Belongs to the major facilitator superfamily. Sugar transporter (TC 2.A.1.1) family. Glucose transporter subfamily.,tissue specificity:Expressed in small intestine, and at much lower levels in kidney, skeletal muscle, and adipose tissue.,

Research Area

Image Data



Western blot analysis of lysate from K562 cells, using SLC2A5 Antibody.



Western Blot analysis of K562 cells using Glut5 Polyclonal Antibody.. Secondary antibody was diluted at 1:20000

Note

For research use only.