

## Summary

<b>Production Name</b>	GLK Rabbit Polyclonal Antibody
<b>Description</b>	Rabbit Polyclonal Antibody
<b>Host</b>	Rabbit
<b>Application</b>	WB,ELISA
<b>Reactivity</b>	Human,Mouse,Rat

## Performance

<b>Conjugation</b>	Unconjugated
<b>Modification</b>	Unmodified
<b>Isotype</b>	IgG
<b>Clonality</b>	Polyclonal
<b>Form</b>	Liquid
<b>Storage</b>	Store at 4°C short term. Aliquot and store at -20°C long term. Avoid freeze/thaw cycles.
<b>Buffer</b>	Liquid in PBS containing 50% glycerol, 0.5% BSA and 0.02% New type preservative N.
<b>Purification</b>	Affinity purification

## Immunogen

<b>Gene Name</b>	MAP4K3 MAP4K3; RAB8IPL1; Mitogen-activated protein kinase kinase kinase 3; Germinal center kinase-related protein kinase; GLK; MAPK/ERK kinase kinase kinase 3; MEK kinase kinase 3; MEKKK 3
<b>Alternative Names</b>	
<b>Gene ID</b>	8491.0
<b>SwissProt ID</b>	Q8IVH8.The antiserum was produced against synthesized peptide derived from human MAP4K3. AA range:10-59

## Application

<b>Dilution Ratio</b>	WB 1:500 - 1:2000. ELISA: 1:20000
<b>Molecular Weight</b>	101kD

## Background

mitogen-activated protein kinase kinase kinase kinase 3(MAP4K3) Homo sapiens This gene encodes a member of the mitogen-activated protein kinase kinase kinase kinase family. The encoded protein activates key effectors in cell signalling, among them c-Jun. Alternatively spliced transcripts encoding multiple isoforms have been observed for this gene.

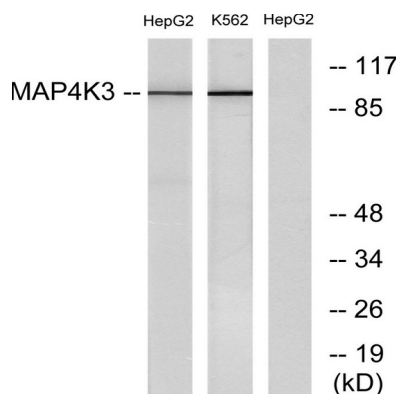
[provided by RefSeq, Jul 2012],catalytic activity:ATP + a protein = ADP + a

phosphoprotein.,cofactor:Magnesium.,function:May play a role in the response to environmental stress. Appears to act upstream of the JUN N-terminal pathway.,similarity:Belongs to the protein kinase superfamily. STE Ser/Thr protein kinase family. STE20 subfamily.,similarity:Contains 1 CNH domain.,similarity:Contains 1 protein kinase domain.,subunit:Interacts with SH3GL2. Interaction appears to regulate MAP4K3-mediated JNK activation.,tissue specificity:Ubiquitously expressed in all tissues examined, with high levels in heart, brain, placenta, skeletal muscle, kidney and pancreas and lower levels in lung and liver.,

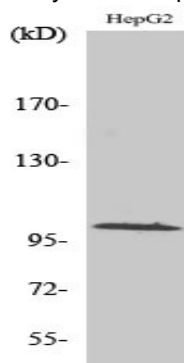
## Research Area

MAPK\_ERK\_Growth;MAPK\_G\_Protein;

## Image Data



Western blot analysis of lysates from HepG2 and K562 cells, using MAP4K3 Antibody. The lane on the right is blocked with the synthesized peptide.



**Product Name: GLK Rabbit Polyclonal Antibody**  
**Catalog #: APRab11469**

---



Western Blot analysis of various cells using GLK Polyclonal Antibody

**Note**

For research use only.