
Summary

Production Name	GIMAP2 Rabbit Polyclonal Antibody
Description	Rabbit Polyclonal Antibody
Host	Rabbit
Application	IF, WB, ELISA
Reactivity	Human, Rat, Mouse

Performance

Conjugation	Unconjugated
Modification	Unmodified
Isotype	IgG
Clonality	Polyclonal
Form	Liquid
Storage	Store at 4°C short term. Aliquot and store at -20°C long term. Avoid freeze/thaw cycles.
Buffer	Liquid in PBS containing 50% glycerol, 0.5% BSA and 0.02% New type preservative N.
Purification	Affinity purification

Immunogen

Gene Name	GIMAP2
Alternative Names	GIMAP2; IMAP2; GTPase IMAP family member 2; Immunity-associated protein 2; hIMAP2
Gene ID	26157.0
SwissProt ID	Q9UG22. The antiserum was produced against synthesized peptide derived from human GIMAP2. AA range: 201-250

Application

Dilution Ratio	WB 1:500 - 1:2000. IF 1:200 - 1:1000. ELISA: 1:20000. Not yet tested in other applications.
Molecular Weight	38kD

Product Name: GIMAP2 Rabbit Polyclonal Antibody
Catalog #: APRab11442

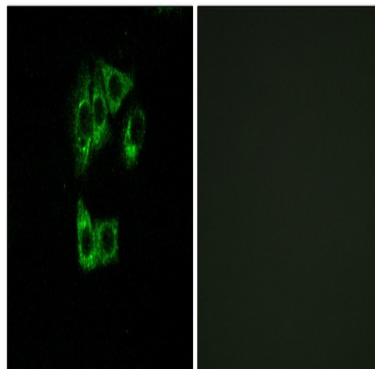


Background

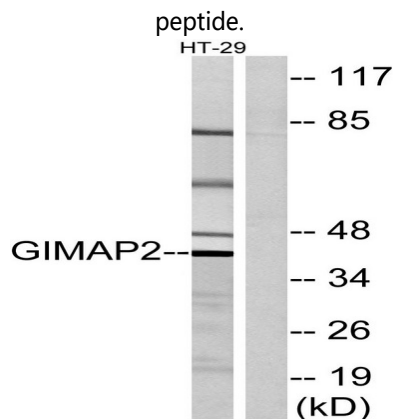
This gene encodes a protein belonging to the GTP-binding superfamily and to the immuno-associated nucleotide (IAN) subfamily of nucleotide-binding proteins. In humans, the IAN subfamily genes are located in a cluster at 7q36.1. [provided by RefSeq, Jul 2008],similarity:Belongs to the IAN GTP-binding protein family.,

Research Area

Image Data

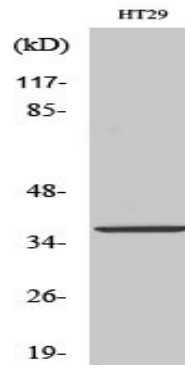


Immunofluorescence analysis of A549 cells, using GIMAP2 Antibody. The picture on the right is blocked with the synthesized



Western blot analysis of lysates from HT-29 cells, using GIMAP2 Antibody. The lane on the right is blocked with the synthesized peptide.

Product Name: GIMAP2 Rabbit Polyclonal Antibody
Catalog #: APRab11442



Western Blot analysis of various cells using GIMAP2 Polyclonal Antibody

Note

For research use only.