

Summary

Production Name	GIDRP88 Rabbit Polyclonal Antibody
Description	Rabbit Polyclonal Antibody
Host	Rabbit
Application	WB,IHC,ELISA
Reactivity	Human,Mouse,Monkey

Performance

Conjugation	Unconjugated
Modification	Unmodified
Isotype	IgG
Clonality	Polyclonal
Form	Liquid
Storage	Store at 4°C short term. Aliquot and store at -20°C long term. Avoid freeze/thaw cycles.
Buffer	Liquid in PBS containing 50% glycerol, 0.5% BSA and 0.02% New type preservative N.
Purification	Affinity purification

Immunogen

Gene Name	R3HCC1L R3HCC1L; C10orf28; GIDRP88; R3H and coiled-coil domain-containing protein 1-like;
Alternative Names	Growth inhibition and differentiation-related protein 88; Putative mitochondrial space protein 32.1
Gene ID	27291.0
SwissProt ID	Q7Z5L2.The antiserum was produced against synthesized peptide derived from human GIDRP88. AA range:721-770

Application

Dilution Ratio	WB 1:500 - 1:2000. IHC 1:100 - 1:300. ELISA: 1:40000..
Molecular Weight	88kD

Product Name: GIDRP88 Rabbit Polyclonal Antibody
Catalog #: APRab11440

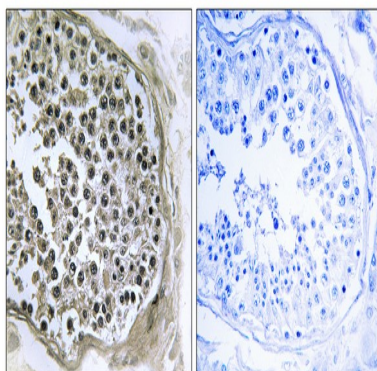


Background

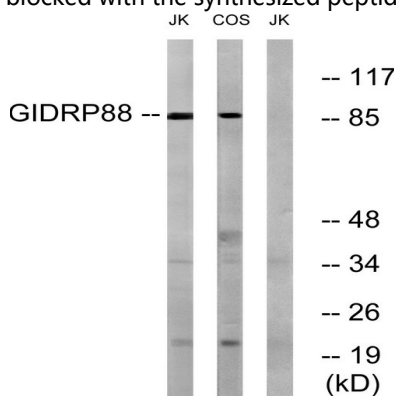
tissue specificity:Expressed in placenta.,tissue specificity:Expressed in placenta.,

Research Area

Image Data



Immunohistochemistry analysis of paraffin-embedded human testis tissue, using GIDRP88 Antibody. The picture on the right is blocked with the synthesized peptide.



Western blot analysis of lysates from Jurkat and COS cells, using GIDRP88 Antibody. The lane on the right is blocked with the synthesized peptide.

Note

For research use only.