

Product Name: GDF-7 Rabbit Polyclonal Antibody
Catalog #: AP Rab11387



Summary

Production Name	GDF-7 Rabbit Polyclonal Antibody
Description	Rabbit Polyclonal Antibody
Host	Rabbit
Application	WB,IHC,ELISA
Reactivity	Human,Mouse,Rat

Performance

Conjugation	Unconjugated
Modification	Unmodified
Isotype	IgG
Clonality	Polyclonal
Form	Liquid
Storage	Store at 4°C short term. Aliquot and store at -20°C long term. Avoid freeze/thaw cycles.
Buffer	Liquid in PBS containing 50% glycerol, 0.5% BSA and 0.02% New type preservative N.
Purification	Affinity purification

Immunogen

Gene Name	GDF7
Alternative Names	GDF7; Growth/differentiation factor 7; GDF-7
Gene ID	151449.0
SwissProt ID	Q7Z4P5.The antiserum was produced against synthesized peptide derived from the Internal region of human GDF7. AA range:321-370

Application

Dilution Ratio	WB 1:500 - 1:2000. IHC-p: 1:100-1:300. ELISA: 1:10000..
Molecular Weight	47kD

Background

Product Name: GDF-7 Rabbit Polyclonal Antibody
Catalog #: APRab11387

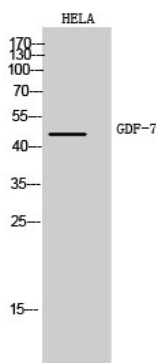


This gene encodes a secreted ligand of the TGF-beta (transforming growth factor-beta) superfamily of proteins. Ligands of this family bind various TGF-beta receptors leading to recruitment and activation of SMAD family transcription factors that regulate gene expression. The encoded preproprotein is proteolytically processed to generate each subunit of the disulfide-linked homodimer. This protein may play a role in the differentiation of tendon cells and spinal cord interneurons. A mutation in this gene may be associated with increased risk for Barrett's esophagus and esophageal adenocarcinoma. [provided by RefSeq, Sep 2016],function:May play an active role in the motor area of the primate neocortex.,similarity:Belongs to the TGF-beta family.,subunit:Homodimer; disulfide-linked.,

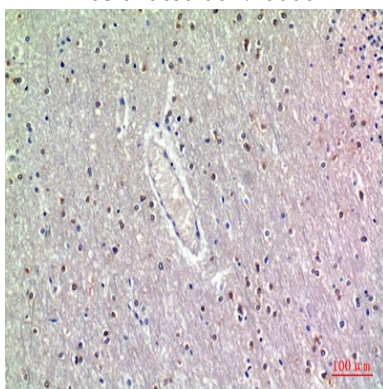
Research Area

TGF-beta;

Image Data



Western Blot analysis of Hela cells using GDF-7 Polyclonal Antibody. Antibody was diluted at 1:1000. Secondary antibody was diluted at 1:20000



Immunohistochemical analysis of paraffin-embedded human-brain, antibody was diluted at 1:200

Note

For research use only.