

Product Name: GDF-3 Rabbit Polyclonal Antibody
Catalog #: APRab11384



Summary

Production Name	GDF-3 Rabbit Polyclonal Antibody
Description	Rabbit Polyclonal Antibody
Host	Rabbit
Application	WB,ELISA
Reactivity	Human,Rat,Mouse

Performance

Conjugation	Unconjugated
Modification	Unmodified
Isotype	IgG
Clonality	Polyclonal
Form	Liquid
Storage	Store at 4°C short term. Aliquot and store at -20°C long term. Avoid freeze/thaw cycles.
Buffer	Liquid in PBS containing 50% glycerol, 0.5% BSA and 0.02% New type preservative N.
Purification	Affinity purification

Immunogen

Gene Name	GDF3
Alternative Names	GDF3; Growth/differentiation factor 3; GDF-3
Gene ID	9573.0
SwissProt ID	Q9NR23.Synthesized peptide derived from Growth/differentiation factor 3 at AA range: 311-360

Application

Dilution Ratio	WB 1:500 - 1:2000. ELISA: 1:10000. Not yet tested in other applications.
Molecular Weight	41kD

Background

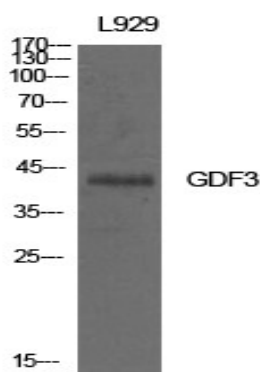
Product Name: GDF-3 Rabbit Polyclonal Antibody
Catalog #: APRab11384



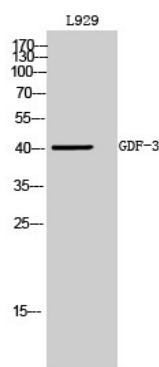
This gene encodes a secreted ligand of the TGF-beta (transforming growth factor-beta) superfamily of proteins. Ligands of this family bind various TGF-beta receptors leading to recruitment and activation of SMAD family transcription factors that regulate gene expression. The encoded preproprotein is proteolytically processed to generate each subunit of the disulfide-linked homodimer. This protein plays a role ocular and skeletal development. Mutations in this gene are associated with microphthalmia, coloboma, and skeletal abnormalities in human patients. [provided by RefSeq, Aug 2016],online information:GDF3 entry,similarity:Belongs to the TGF-beta family.,subunit:Homodimer or heterodimer (Potential). But, in contrast to other members of this family, cannot be disulfide-linked.,

Research Area

Image Data

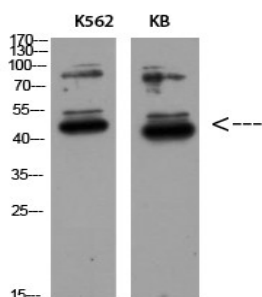


Western Blot analysis of L929 cells using GDF-3 Polyclonal Antibody. Antibody was diluted at 1:500. Secondary antibody was diluted at 1:20000



Western Blot analysis of L929 cells using GDF-3 Polyclonal Antibody diluted at 1: 500. Secondary antibody was diluted at 1:20000

Product Name: GDF-3 Rabbit Polyclonal Antibody
Catalog #: APRab11384



Western Blot analysis of K562 KB using GDF-3 Polyclonal Antibody diluted at 1:500. Secondary antibody was diluted at 1:20000

Note

For research use only.