

Product Name: GDF-15 Rabbit Polyclonal Antibody
Catalog #: APRab11382



Summary

| | |
|------------------------|-----------------------------------|
| Production Name | GDF-15 Rabbit Polyclonal Antibody |
| Description | Rabbit Polyclonal Antibody |
| Host | Rabbit |
| Application | WB,ELISA |
| Reactivity | Human,Rat,Mouse |

Performance

| | |
|---------------------|--|
| Conjugation | Unconjugated |
| Modification | Unmodified |
| Isotype | IgG |
| Clonality | Polyclonal |
| Form | Liquid |
| Storage | Store at 4°C short term. Aliquot and store at -20°C long term. Avoid freeze/thaw cycles. |
| Buffer | Liquid in PBS containing 50% glycerol, 0.5% BSA and 0.02% New type preservative N. |
| Purification | Affinity purification |

Immunogen

| | |
|--------------------------|--|
| Gene Name | GDF15 |
| Alternative Names | GDF15; MIC1; PDF; PLAB; PTGFB; Growth/differentiation factor 15; GDF-15; Macrophage inhibitory cytokine 1; MIC-1; NSAID-activated gene 1 protein; NAG-1; NSAID-regulated gene 1 protein; NRG-1; Placental TGF-beta; Placental bone morphogenetic |
| Gene ID | 9518.0 |
| SwissProt ID | Q99988.The antiserum was produced against synthesized peptide derived from human GDF15. AA range:31-80 |

Application

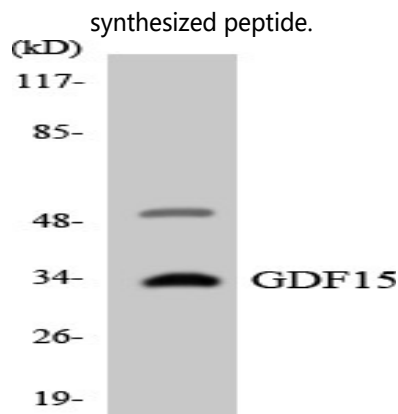
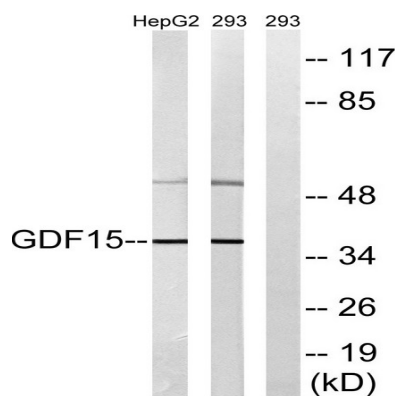
| | |
|-------------------------|--|
| Dilution Ratio | WB 1:500 - 1:2000. ELISA: 1:40000. Not yet tested in other applications. |
| Molecular Weight | 37kD |

Background

growth differentiation factor 15(GDF15) Homo sapiens This gene encodes a secreted ligand of the TGF-beta (transforming growth factor-beta) superfamily of proteins. Ligands of this family bind various TGF-beta receptors leading to recruitment and activation of SMAD family transcription factors that regulate gene expression. The encoded preproprotein is proteolytically processed to generate each subunit of the disulfide-linked homodimer. The protein is expressed in a broad range of cell types, acts as a pleiotropic cytokine and is involved in the stress response program of cells after cellular injury. Increased protein levels are associated with disease states such as tissue hypoxia, inflammation, acute injury and oxidative stress. [provided by RefSeq, Aug 2016],similarity:Belongs to the TGF-beta family.,subunit:Homodimer; disulfide-linked.,tissue specificity:Highly expressed in placenta, with lower levels in prostate and colon and some expression in kidney.,

Research Area

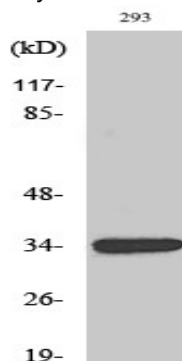
Image Data



Product Name: GDF-15 Rabbit Polyclonal Antibody
Catalog #: APRab11382



Western blot analysis of the lysates from HT-29 cells using GDF15 antibody.



Western Blot analysis of various cells using GDF-15 Polyclonal Antibody diluted at 1: 1000

Note

For research use only.