

## Summary

<b>Production Name</b>	GCSm-γ Rabbit Polyclonal Antibody
<b>Description</b>	Rabbit Polyclonal Antibody
<b>Host</b>	Rabbit
<b>Application</b>	WB,IHC,IF,ELISA
<b>Reactivity</b>	Human,Mouse,Rat,Monkey

## Performance

<b>Conjugation</b>	Unconjugated
<b>Modification</b>	Unmodified
<b>Isotype</b>	IgG
<b>Clonality</b>	Polyclonal
<b>Form</b>	Liquid
<b>Storage</b>	Store at 4°C short term. Aliquot and store at -20°C long term. Avoid freeze/thaw cycles.
<b>Buffer</b>	Liquid in PBS containing 50% glycerol, 0.5% BSA and 0.02% New type preservative N.
<b>Purification</b>	Affinity purification

## Immunogen

<b>Gene Name</b>	GCLM GCLM; GLCLR; Glutamate--cysteine ligase regulatory subunit; GCS light chain; Gamma-
<b>Alternative Names</b>	ECS regulatory subunit; Gamma-glutamylcysteine synthetase regulatory subunit; Glutamate--cysteine ligase modifier subunit
<b>Gene ID</b>	2730.0
<b>SwissProt ID</b>	P48507.The antiserum was produced against synthesized peptide derived from human GCSm-gamma. AA range:42-91

## Application

<b>Dilution Ratio</b>	WB 1:500 - 1:2000. IHC 1:100 - 1:300. ELISA: 1:10000.. IF 1:50-200
<b>Molecular Weight</b>	31kD

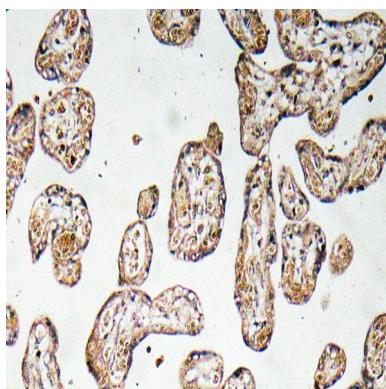
## Background

Glutamate-cysteine ligase, also known as gamma-glutamylcysteine synthetase, is the first rate limiting enzyme of glutathione synthesis. The enzyme consists of two subunits, a heavy catalytic subunit and a light regulatory subunit. Gamma glutamylcysteine synthetase deficiency has been implicated in some forms of hemolytic anemia. Alternative splicing results in multiple transcript variants encoding different isoforms. [provided by RefSeq, Apr 2015], pathway: Sulfur metabolism; glutathione biosynthesis; glutathione from L-cysteine and L-glutamate: step 1/2., similarity: Belongs to the aldo/keto reductase family. Glutamate--cysteine ligase light chain subfamily., subunit: Heterodimer of a catalytic heavy chain and a regulatory light chain., tissue specificity: In all tissues examined. Highest levels in skeletal muscle.,

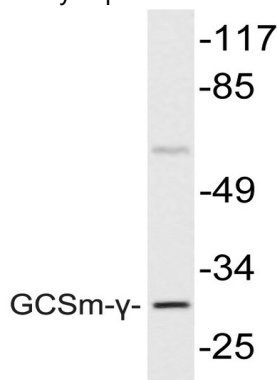
## Research Area

Glutathione metabolism;

## Image Data

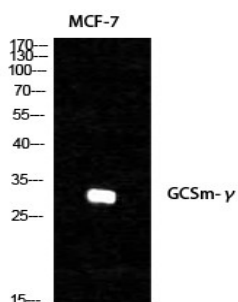


Immunohistochemistry analysis of GCSm-γ antibody in paraffin-embedded human prostate carcinoma tissue.

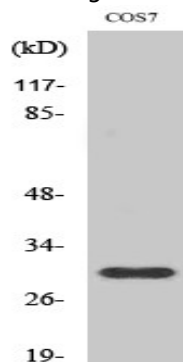


Western blot analysis of lysate from COS7 cells, using GCSm-γ antibody.

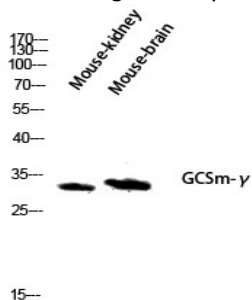
**Product Name: GCSm- $\gamma$  Rabbit Polyclonal Antibody**  
**Catalog #: APRab11373**



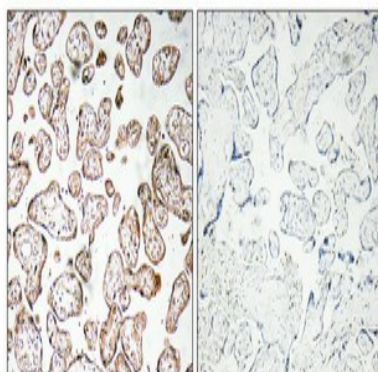
Western Blot analysis of various cells using GCSm- $\gamma$  Polyclonal Antibody diluted at 1: 1000



Western Blot analysis of COS7 cells using GCSm- $\gamma$  Polyclonal Antibody diluted at 1: 1000



Western blot analysis of Mouse-kidney mouse-brain lysis using GCSm- $\gamma$  antibody. Antibody was diluted at 1:1000



**Product Name: GCSm-γ Rabbit Polyclonal Antibody**  
**Catalog #: APRab11373**



---

Immunohistochemical analysis of paraffin-embedded Human placenta. Antibody was diluted at 1:100 (4°,overnight) .  
High-pressure and temperature Tris-EDTA,pH8.0 was used for antigen retrieval. Negetive contrl (right) obtaned from  
antibody was pre-absorbed by immunogen peptide.

## **Note**

For research use only.