

**Product Name: GCNT7 Rabbit Polyclonal Antibody**  
**Catalog #: APRab11363**



## Summary

<b>Production Name</b>	GCNT7 Rabbit Polyclonal Antibody
<b>Description</b>	Rabbit Polyclonal Antibody
<b>Host</b>	Rabbit
<b>Application</b>	IF,IHC,WB,
<b>Reactivity</b>	Human,Rat,Mouse

## Performance

<b>Conjugation</b>	Unconjugated
<b>Modification</b>	Unmodified
<b>Isotype</b>	IgG
<b>Clonality</b>	Polyclonal
<b>Form</b>	Liquid
<b>Storage</b>	Store at 4°C short term. Aliquot and store at -20°C long term. Avoid freeze/thaw cycles.
<b>Buffer</b>	Liquid in PBS containing 50% glycerol, 0.5% BSA and 0.02% New type preservative N.
<b>Purification</b>	Affinity purification

## Immunogen

<b>Gene Name</b>	GCNT7
<b>Alternative Names</b>	GCNT7; C20orf105; Beta-1; 3-galactosyl-O-glycosyl-glycoprotein beta-1,6-N-acetylglucosaminyltransferase 7
<b>Gene ID</b>	140687.0
<b>SwissProt ID</b>	Q6ZNI0.The antiserum was produced against synthesized peptide derived from human GCNT7. AA range:311-360

## Application

<b>Dilution Ratio</b>	WB 1:500 - 1:2000 IHC 1:100 - 1:300. IF 1:200 - 1:1000. ELISA: 1:40000. Not yet tested in other applications.
<b>Molecular Weight</b>	49kD

**Product Name: GCNT7 Rabbit Polyclonal Antibody**  
**Catalog #: APRab11363**

---

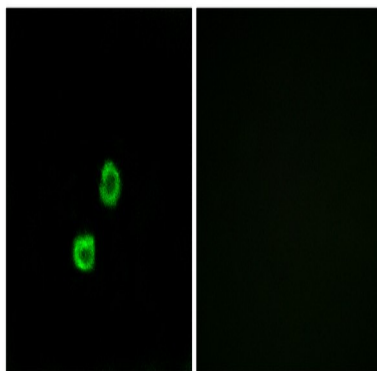


## Background

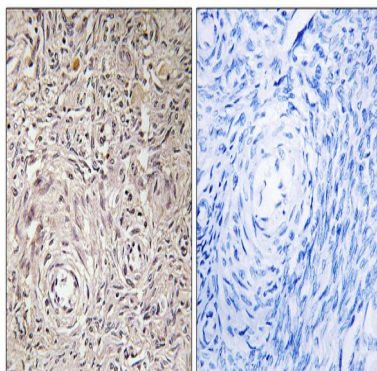
function:Glycosyltransferase.,pathway:Protein modification; protein glycosylation.,sequence caution:Translated as Gln.,similarity:Belongs to the glycosyltransferase 14 family.,function:Glycosyltransferase.,pathway:Protein modification; protein glycosylation.,sequence caution:Translated as Gln.,similarity:Belongs to the glycosyltransferase 14 family.,

## Research Area

## Image Data

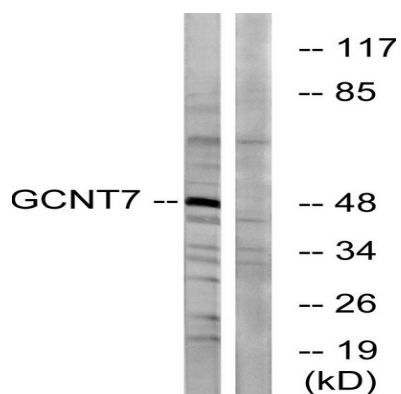


Immunofluorescence analysis of MCF7 cells, using GCNT7 Antibody. The picture on the right is blocked with the synthesized peptide.

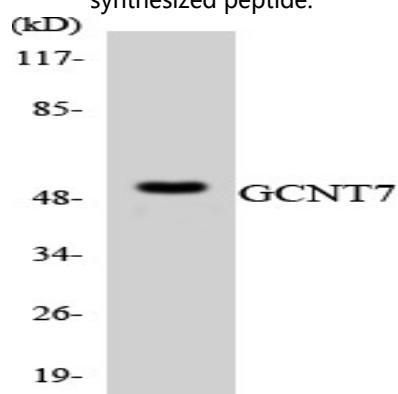


Immunohistochemistry analysis of paraffin-embedded human ovary tissue, using GCNT7 Antibody. The picture on the right is blocked with the synthesized peptide.

**Product Name: GCNT7 Rabbit Polyclonal Antibody**  
**Catalog #: APRab11363**



Western blot analysis of lysates from K562 cells, using GCNT7 Antibody. The lane on the right is blocked with the synthesized peptide.



Western blot analysis of the lysates from HT-29 cells using GCNT7 antibody.

## **Note**

For research use only.