

Product Name: GALR3 Rabbit Polyclonal Antibody
Catalog #: APRab11284



Summary

Production Name	GALR3 Rabbit Polyclonal Antibody
Description	Rabbit Polyclonal Antibody
Host	Rabbit
Application	IF,ELISA
Reactivity	Human,Rat,Mouse

Performance

Conjugation	Unconjugated
Modification	Unmodified
Isotype	IgG
Clonality	Polyclonal
Form	Liquid
Storage	Store at 4°C short term. Aliquot and store at -20°C long term. Avoid freeze/thaw cycles.
Buffer	Liquid in PBS containing 50% glycerol, 0.5% BSA and 0.02% New type preservative N.
Purification	Affinity purification

Immunogen

Gene Name	GALR3
Alternative Names	GALR3; GALNR3; Galanin receptor type 3; GAL3-R; GALR-3
Gene ID	8484.0
SwissProt ID	O60755.The antiserum was produced against synthesized peptide derived from human GALR3. AA range:291-340

Application

Dilution Ratio	IF 1:200-1:1000. ELISA: 1:20000.
Molecular Weight	40kD

Background

The neuropeptide galanin modulates a variety of physiologic processes including cognition/memory, sensory/pain

Product Name: GALR3 Rabbit Polyclonal Antibody
Catalog #: AP Rab11284

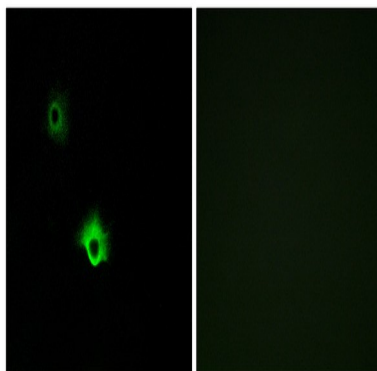


processing, hormone secretion, and feeding behavior. The human galanin receptors are G protein-coupled receptors that functionally couple to their intracellular effector through distinct signaling pathways. GALR3 is found in many tissues and may be expressed as 1.4-, 2.4-, and 5-kb transcripts [provided by RefSeq, Jul 2008],function:Receptor for the hormone galanin.,similarity:Belongs to the G-protein coupled receptor 1 family.,

Research Area

Neuroactive ligand-receptor interaction;

Image Data



Immunofluorescence analysis of A549 cells, using GALR3 Antibody. The picture on the right is blocked with the synthesized peptide.

Note

For research use only.