

**Product Name: GALR1 Rabbit Polyclonal Antibody**  
**Catalog #: APRab11282**



## Summary

<b>Production Name</b>	GALR1 Rabbit Polyclonal Antibody
<b>Description</b>	Rabbit Polyclonal Antibody
<b>Host</b>	Rabbit
<b>Application</b>	IF,ELISA
<b>Reactivity</b>	Human,Mouse

## Performance

<b>Conjugation</b>	Unconjugated
<b>Modification</b>	Unmodified
<b>Isotype</b>	IgG
<b>Clonality</b>	Polyclonal
<b>Form</b>	Liquid
<b>Storage</b>	Store at 4°C short term. Aliquot and store at -20°C long term. Avoid freeze/thaw cycles.
<b>Buffer</b>	Liquid in PBS containing 50% glycerol, 0.5% BSA and 0.02% New type preservative N.
<b>Purification</b>	Affinity purification

## Immunogen

<b>Gene Name</b>	GALR1
<b>Alternative Names</b>	GALR1; GALNR; GALNR1; Galanin receptor type 1; GAL1-R; GALR-1
<b>Gene ID</b>	2587.0
<b>SwissProt ID</b>	P47211.The antiserum was produced against synthesized peptide derived from human GALR1. AA range:161-210

## Application

<b>Dilution Ratio</b>	IF 1:200-1:1000. ELISA: 1:5000.
<b>Molecular Weight</b>	

## Background

The neuropeptide galanin elicits a range of biological effects by interaction with specific G-protein-coupled receptors.

**Product Name: GALR1 Rabbit Polyclonal Antibody**  
**Catalog #: APRab11282**

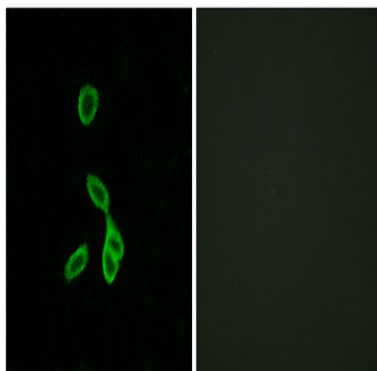


Galanin receptors are seven-transmembrane proteins shown to activate a variety of intracellular second-messenger pathways. GALR1 inhibits adenylyl cyclase via a G protein of the Gi/Go family. GALR1 is widely expressed in the brain and spinal cord, as well as in peripheral sites such as the small intestine and heart. [provided by RefSeq, Jul 2008],function:Receptor for the hormone galanin. The activity of this receptor is mediated by G proteins that inhibit adenylyl cyclase activity.,PTM:Palmitoylated on at least one of the three cysteine residues present in the C-terminal part.,similarity:Belongs to the G-protein coupled receptor 1 family,

## Research Area

Neuroactive ligand-receptor interaction;

## Image Data



Immunofluorescence analysis of LOVO cells, using GALR1 Antibody. The picture on the right is blocked with the synthesized peptide.

## Note

For research use only.