

Summary

Production Name	Gads Rabbit Polyclonal Antibody
Description	Rabbit Polyclonal Antibody
Host	Rabbit
Application	WB,
Reactivity	Human,Rat,Mouse

Performance

Conjugation	Unconjugated
Modification	Unmodified
Isotype	IgG
Clonality	Polyclonal
Form	Liquid
Storage	Store at 4°C short term. Aliquot and store at -20°C long term. Avoid freeze/thaw cycles.
Buffer	Liquid in PBS containing 50% glycerol, 0.5% BSA and 0.02% New type preservative N.
Purification	Affinity purification

Immunogen

Gene Name	GRAP2 GRAP2; GADS; GRB2L; GRID; GRB2-related adapter protein 2; Adapter protein GRID;
Alternative Names	GRB-2-like protein; GRB2L; GRBLG; GRBX; Grf40 adapter protein; Grf-40; Growth factor receptor-binding protein; Hematopoietic cell-associated adapter protein Grp
Gene ID	9402.0
SwissProt ID	O75791.The antiserum was produced against synthesized peptide derived from human GRAP2. AA range:121-170

Application

Dilution Ratio	WB 1:500 - 1:2000. ELISA: 1:40000. Not yet tested in other applications.
Molecular Weight	38kD

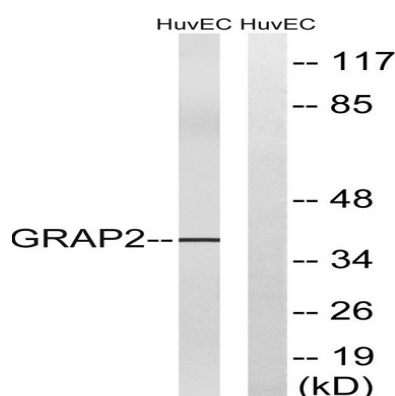
Background

This gene encodes a member of the GRB2/Sem5/Drk family. This member is an adaptor-like protein involved in leukocyte-specific protein-tyrosine kinase signaling. Like its related family member, GRB2-related adaptor protein (GRAP), this protein contains an SH2 domain flanked by two SH3 domains. This protein interacts with other proteins, such as GRB2-associated binding protein 1 (GAB1) and the SLP-76 leukocyte protein (LCP2), through its SH3 domains. Multiple alternatively spliced transcript variants encoding distinct isoforms have been found for this gene. [provided by RefSeq, Apr 2014],function:Interacts with SLP-76 to regulate NF-AT activation. Binds to tyrosine-phosphorylated shc.,similarity:Belongs to the GRB2/sem-5/DRK family.,similarity:Contains 1 SH2 domain.,similarity:Contains 2 SH3 domains.,subunit:Interacts with phosphorylated LIME1 upon TCR activation (By similarity). Interacts with phosphorylated LAT and LAX1 upon TCR activation. Interacts with SHB.,

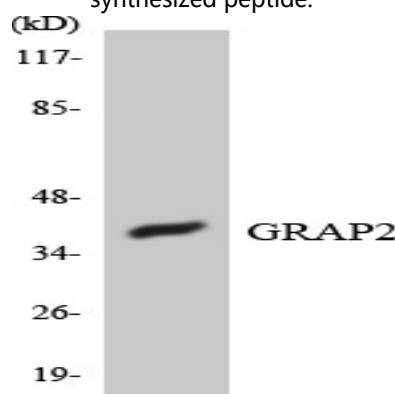
Research Area

T_Cell_Receptor;

Image Data

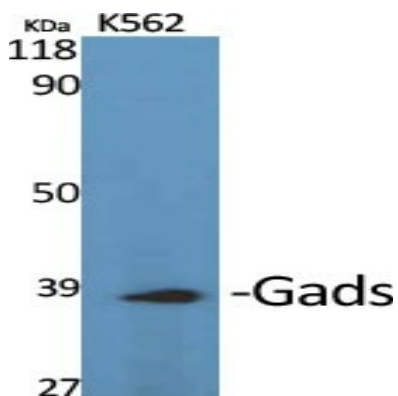


Western blot analysis of lysates from HUVEC cells, using GRAP2 Antibody. The lane on the right is blocked with the synthesized peptide.

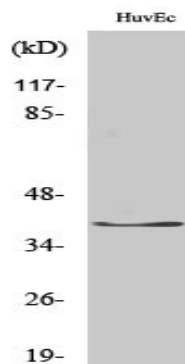


Western blot analysis of the lysates from HUVEC cells using GRAP2 antibody.

Product Name: Gads Rabbit Polyclonal Antibody
Catalog #: APRab11253



Western Blot analysis of various cells using Gads Polyclonal Antibody



Western Blot analysis of HuvEc cells using Gads Polyclonal Antibody

Note

For research use only.