

**Product Name: Fucokinase Rabbit Polyclonal Antibody**  
**Catalog #: APRab11181**



## Summary

<b>Production Name</b>	Fucokinase Rabbit Polyclonal Antibody
<b>Description</b>	Rabbit Polyclonal Antibody
<b>Host</b>	Rabbit
<b>Application</b>	IF, WB, ELISA
<b>Reactivity</b>	Human, Mouse, Monkey

## Performance

<b>Conjugation</b>	Unconjugated
<b>Modification</b>	Unmodified
<b>Isotype</b>	IgG
<b>Clonality</b>	Polyclonal
<b>Form</b>	Liquid
<b>Storage</b>	Store at 4°C short term. Aliquot and store at -20°C long term. Avoid freeze/thaw cycles.
<b>Buffer</b>	Liquid in PBS containing 50% glycerol, 0.5% BSA and 0.02% New type preservative N.
<b>Purification</b>	Affinity purification

## Immunogen

<b>Gene Name</b>	FUK
<b>Alternative Names</b>	FUK; L-fucose kinase; Fucokinase
<b>Gene ID</b>	197258.0
<b>SwissProt ID</b>	Q8N0W3. The antiserum was produced against synthesized peptide derived from human FUK. AA range: 11-60

## Application

<b>Dilution Ratio</b>	WB 1:500 - 1:2000. IF 1:200 - 1:1000. ELISA: 1:20000. Not yet tested in other applications.
<b>Molecular Weight</b>	110kD

**Product Name: Fucokinase Rabbit Polyclonal Antibody**  
**Catalog #: APRab11181**



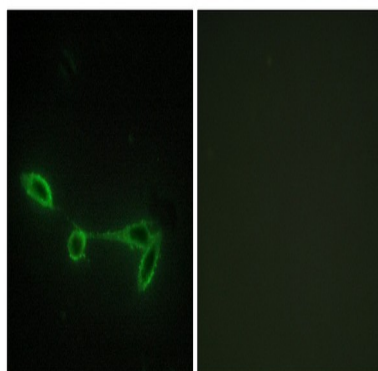
## Background

fucokinase(FUK) Homo sapiens The protein encoded by this gene belongs to the GHMP (galacto-, homoserine, mevalonate and phosphomevalonate) kinase family and catalyzes the phosphorylation of L-fucose to form beta-L-fucose 1-phosphate. This enzyme catalyzes the first step in the utilization of free L-fucose in glycoprotein and glycolipid synthesis. L-fucose may be important in mediating a number of cell-cell interactions such as blood group antigen recognition, inflammation, and metastasis. While several transcript variants may exist for this gene, the full-length nature of only one has been described to date. [provided by RefSeq, Jul 2008],catalytic activity:ATP + L-fucose = ADP + beta-L-fucose 1-phosphate.,function:Takes part in the salvage pathway for reutilization of fucose from the degradation of oligosaccharides.,similarity:Belongs to the GHMP kinase family.,

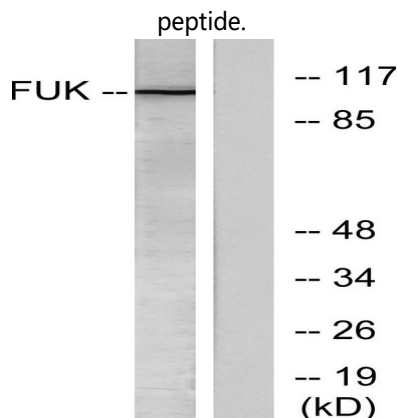
## Research Area

Fructose and mannose metabolism;Amino sugar and nucleotide sugar metabolism;

## Image Data

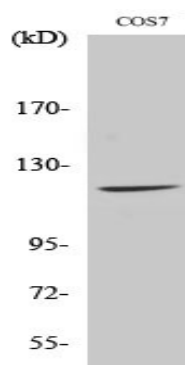


Immunofluorescence analysis of NIH/3T3 cells, using FUK Antibody. The picture on the right is blocked with the synthesized peptide.



Western blot analysis of lysates from COS7 cells, treated with insulin 0.01U/ml 45', using FUK Antibody. The lane on the right is blocked with the synthesized peptide.

**Product Name: Fucokinase Rabbit Polyclonal Antibody**  
**Catalog #: APRab11181**



Western Blot analysis of various cells using Fucokinase Polyclonal Antibody

**Note**

For research use only.