

Product Name: FRP-2 Rabbit Polyclonal Antibody
Catalog #: APRab11153



Summary

Production Name	FRP-2 Rabbit Polyclonal Antibody
Description	Rabbit Polyclonal Antibody
Host	Rabbit
Application	WB,ELISA
Reactivity	Human,Mouse,Rat

Performance

Conjugation	Unconjugated
Modification	Unmodified
Isotype	IgG
Clonality	Polyclonal
Form	Liquid
Storage	Store at 4°C short term. Aliquot and store at -20°C long term. Avoid freeze/thaw cycles.
Buffer	Liquid in PBS containing 50% glycerol, 0.5% BSA and 0.02% New type preservative N.
Purification	Affinity purification

Immunogen

Gene Name	SFRP2
Alternative Names	SFRP2; FRP2; SARP1; FKSG12; Secreted frizzled-related protein 2; FRP-2; sFRP-2; Secreted apoptosis-related protein 1; SARP-1
Gene ID	6423.0
SwissProt ID	Q96HF1.The antiserum was produced against synthesized peptide derived from human SFRP2. AA range:119-168

Application

Dilution Ratio	WB 1:500 - 1:2000. ELISA: 1:5000. Not yet tested in other applications.
Molecular Weight	30kD

Product Name: FRP-2 Rabbit Polyclonal Antibody
Catalog #: AP Rab11153



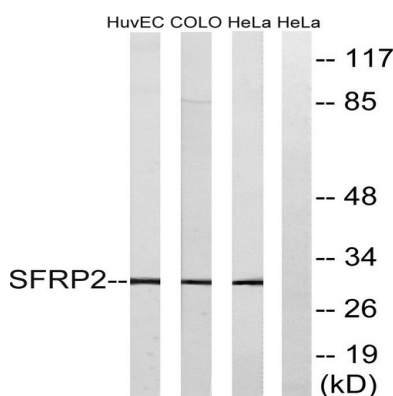
Background

This gene encodes a member of the SFRP family that contains a cysteine-rich domain homologous to the putative Wnt-binding site of Frizzled proteins. SFRPs act as soluble modulators of Wnt signaling. Methylation of this gene is a potential marker for the presence of colorectal cancer. [provided by RefSeq, Jul 2008],domain:The FZ domain is involved in binding with Wnt ligands.,function:Soluble frizzled-related proteins (sFRPs) function as modulators of Wnt signaling through direct interaction with Wnts. They have a role in regulating cell growth and differentiation in specific cell types. SFRP2 may be important for eye retinal development and for myogenesis.,similarity:Belongs to the secreted frizzled-related protein (sFRP) family.,similarity:Contains 1 FZ (frizzled) domain.,similarity:Contains 1 NTR domain.,tissue specificity:Expressed in adipose tissue, heart, brain, skeletal muscle, pancreas, thymus, prostate, testis, ovary, small intestine and colon. Highest levels in adipose tissue, small intestine and colon.,

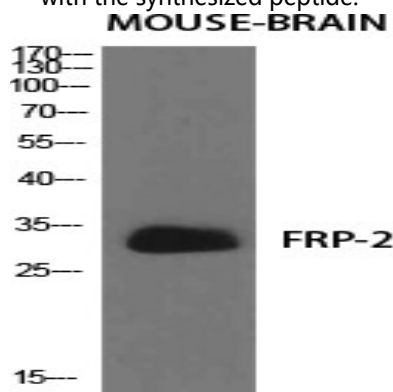
Research Area

WNT;WNT-T CELL

Image Data

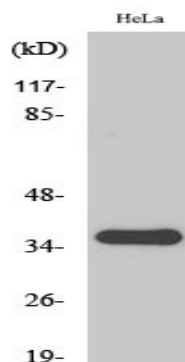


Western blot analysis of lysates from HeLa, COLO, and HUVEC cells, using SFRP2 Antibody. The lane on the right is blocked with the synthesized peptide.



Western Blot analysis of various cells using FRP-2 Polyclonal Antibody diluted at 1: 500

Product Name: FRP-2 Rabbit Polyclonal Antibody
Catalog #: APRab11153



Western Blot analysis of HuvEc cells using FRP-2 Polyclonal Antibody diluted at 1: 500

Note

For research use only.