

Summary

Production Name	FPRL2 Rabbit Polyclonal Antibody
Description	Rabbit Polyclonal Antibody
Host	Rabbit
Application	IF,ELISA
Reactivity	Human,Rat,Mouse

Performance

Conjugation	Unconjugated
Modification	Unmodified
Isotype	IgG
Clonality	Polyclonal
Form	Liquid
Storage	Store at 4°C short term. Aliquot and store at -20°C long term. Avoid freeze/thaw cycles.
Buffer	Liquid in PBS containing 50% glycerol, 0.5% BSA and 0.02% New type preservative N.
Purification	Affinity purification

Immunogen

Gene Name	FPR3
Alternative Names	FPR3; FPRH1; FPRL2; N-formyl peptide receptor 3; FMLP-related receptor II; FMLP-R-II; Formyl peptide receptor-like 2
Gene ID	2359.0
SwissProt ID	P25089.The antiserum was produced against synthesized peptide derived from human FPRL2. AA range:304-353

Application

Dilution Ratio	IF 1:200-1:1000. ELISA: 1:40000.
Molecular Weight	

Background

Product Name: FPRL2 Rabbit Polyclonal Antibody
Catalog #: APRab11125

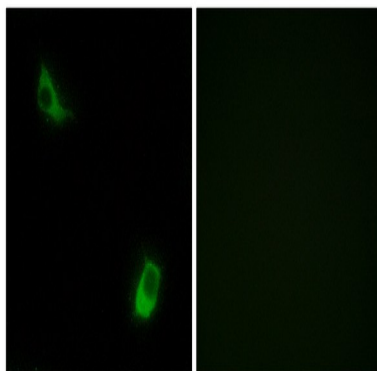


function:Low affinity receptor for N-formyl-methionyl peptides, which are powerful neutrophils chemotactic factors. Binding of FMLP to the receptor causes activation of neutrophils. This response is mediated via a G-protein that activates a phosphatidylinositol-calcium second messenger system.,similarity:Belongs to the G-protein coupled receptor 1 family.,function:Low affinity receptor for N-formyl-methionyl peptides, which are powerful neutrophils chemotactic factors. Binding of FMLP to the receptor causes activation of neutrophils. This response is mediated via a G-protein that activates a phosphatidylinositol-calcium second messenger system.,similarity:Belongs to the G-protein coupled receptor 1 family.,

Research Area

Neuroactive ligand-receptor interaction;

Image Data



Immunofluorescence analysis of LOVO cells, using FPRL2 Antibody. The picture on the right is blocked with the synthesized peptide.

Note

For research use only.