

Product Name: FPR1 Rabbit Polyclonal Antibody
Catalog #: APRab11122



Summary

| | |
|------------------------|---------------------------------|
| Production Name | FPR1 Rabbit Polyclonal Antibody |
| Description | Rabbit Polyclonal Antibody |
| Host | Rabbit |
| Application | IF,ELISA |
| Reactivity | Human,Rat,Mouse |

Performance

| | |
|---------------------|--|
| Conjugation | Unconjugated |
| Modification | Unmodified |
| Isotype | IgG |
| Clonality | Polyclonal |
| Form | Liquid |
| Storage | Store at 4°C short term. Aliquot and store at -20°C long term. Avoid freeze/thaw cycles. |
| Buffer | Liquid in PBS containing 50% glycerol, 0.5% BSA and 0.02% New type preservative N. |
| Purification | Affinity purification |

Immunogen

| | |
|--------------------------|--|
| Gene Name | FPR1 |
| Alternative Names | FPR1; fMet-Leu-Phe receptor; fMLP receptor; N-formyl peptide receptor; FPR; N-formylpeptide chemoattractant receptor |
| Gene ID | 2357.0 |
| SwissProt ID | P21462.The antiserum was produced against synthesized peptide derived from human FPR1. AA range:151-200 |

Application

| | |
|-------------------------|----------------------------------|
| Dilution Ratio | IF 1:200-1:1000. ELISA: 1:20000. |
| Molecular Weight | 38kD |

Background

Product Name: FPR1 Rabbit Polyclonal Antibody
Catalog #: APRab11122

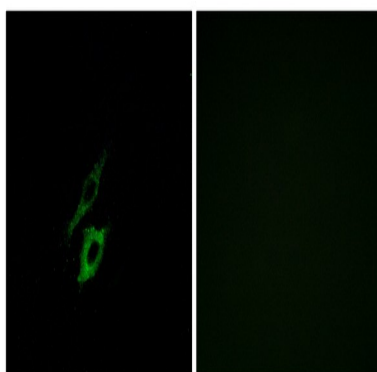


formyl peptide receptor 1(FPR1) Homo sapiens This gene encodes a G protein-coupled receptor of mammalian phagocytic cells that is a member of the G-protein coupled receptor 1 family. The protein mediates the response of phagocytic cells to invasion of the host by microorganisms and is important in host defense and inflammation.[provided by RefSeq, Jul 2010],function:High affinity receptor for N-formyl-methionyl peptides, which are powerful neutrophils chemotactic factors. Binding of FMLP to the receptor causes activation of neutrophils. This response is mediated via a G-protein that activates a phosphatidylinositol-calcium second messenger system.,PTM:Phosphorylated; which is necessary for desensitization.,similarity:Belongs to the G-protein coupled receptor 1 family.,tissue specificity:Neutrophils.,

Research Area

Neuroactive ligand-receptor interaction;

Image Data



Immunofluorescence analysis of A549 cells, using FPR1 Antibody. The picture on the right is blocked with the synthesized peptide.

Note

For research use only.