
Summary

Production Name	FOXP1 Rabbit Polyclonal Antibody
Description	Rabbit Polyclonal Antibody
Host	Rabbit
Application	WB,IHC,IF,ELISA
Reactivity	Human,Mouse,Rat

Performance

Conjugation	Unconjugated
Modification	Unmodified
Isotype	IgG
Clonality	Polyclonal
Form	Liquid
Storage	Store at 4°C short term. Aliquot and store at -20°C long term. Avoid freeze/thaw cycles.
Buffer	Liquid in PBS containing 50% glycerol, 0.5% BSA and 0.02% New type preservative N.
Purification	Affinity purification

Immunogen

Gene Name	FOXP1
Alternative Names	FOXP1; HSPC215; Forkhead box protein P1
Gene ID	27086.0
SwissProt ID	Q9H334.The antiserum was produced against synthesized peptide derived from the C-terminal region of human FOXP1. AA range:628-677

Application

Dilution Ratio	WB 1:500 - 1:2000. IHC-p: 1:100-300 ELISA: 1:20000.. IF 1:50-200
Molecular Weight	75kD

Background

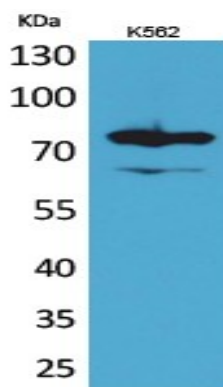
Product Name: FOXP1 Rabbit Polyclonal Antibody
Catalog #: APRab11113



This gene belongs to subfamily P of the forkhead box (FOX) transcription factor family. Forkhead box transcription factors play important roles in the regulation of tissue- and cell type-specific gene transcription during both development and adulthood. Forkhead box P1 protein contains both DNA-binding- and protein-protein binding-domains. This gene may act as a tumor suppressor as it is lost in several tumor types and maps to a chromosomal region (3p14.1) reported to contain a tumor suppressor gene(s). Alternative splicing results in multiple transcript variants encoding different isoforms. [provided by RefSeq, Jul 2008],alternative products:Additional isoforms seem to exist,disease:A chromosomal aberration involving FOXP1 is found in acute lymphoblastic leukemia. Translocation t(9;3)(p13;p14.1) with PAX5.,domain:The leucine-zipper is required for dimerization and transcriptional repression.,function:Transcriptional repressor that plays an important role in the specification and differentiation of lung epithelium. Can act with CTBP1 to synergistically repress transcription but CTPBP1 is not essential. Essential transcriptional regulator of B cell development.,similarity:Contains 1 C2H2-type zinc finger.,similarity:Contains 1 fork-head DNA-binding domain.,subunit:Forms homodimers and heterodimers with FOXP2 and FOXP4. Dimerization is required for DNA-binding. Interacts with CTBP1.,

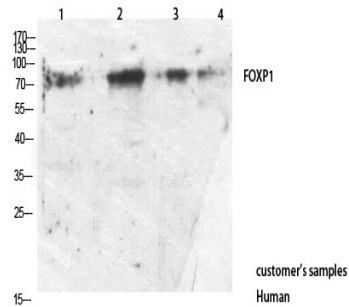
Research Area

Image Data

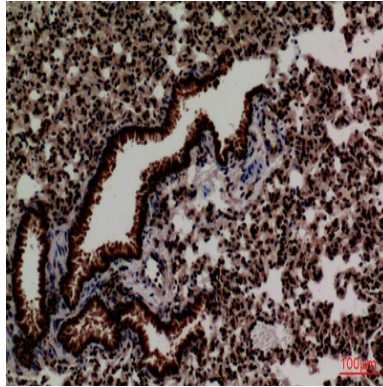


Western Blot analysis of K562 cells using FOXP1 Polyclonal Antibody. Antibody was diluted at 1:1000. Secondary antibody was diluted at 1:20000 cells nucleus extracted by Minute TM Cytoplasmic and Nuclear Fractionation kit (SC-003, Inventbiotech, MN, USA) .

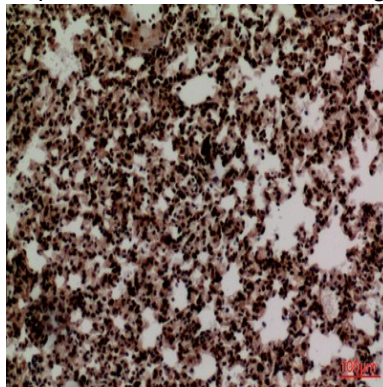
Product Name: FOXP1 Rabbit Polyclonal Antibody
Catalog #: APRab11113



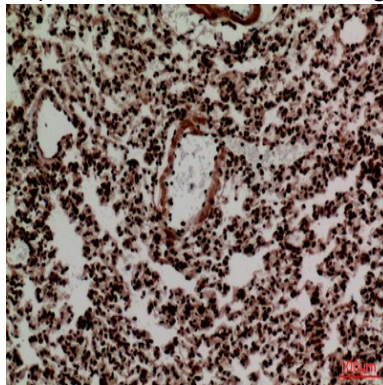
Western Blot analysis of customer 's using FOXP1 Antibody Polyclonal Antibody.



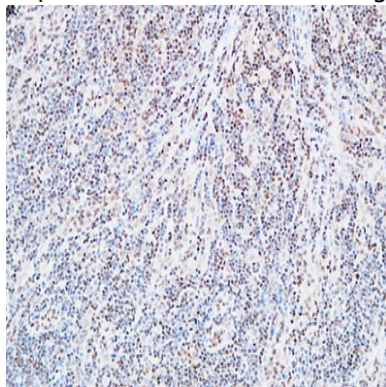
Immunohistochemical analysis of paraffin-embedded mouse-lung, antibody was diluted at 1:100



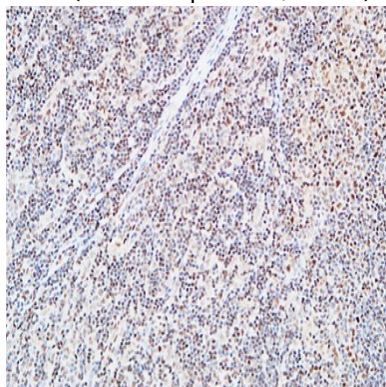
Immunohistochemical analysis of paraffin-embedded mouse-lung, antibody was diluted at 1:100



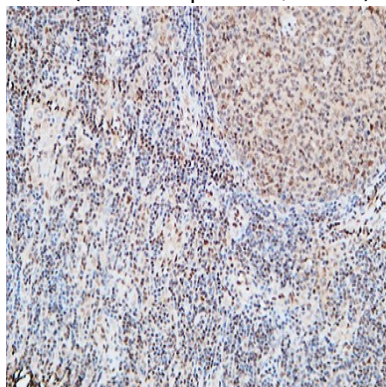
Immunohistochemical analysis of paraffin-embedded mouse-lung, antibody was diluted at 1:100



Immunohistochemical analysis of paraffin-embedded Human lymphoma. 1, Antibody was diluted at 1:200 (4°,overnight) .
2, High-pressure and temperature EDTA, pH8.0 was used for antigen retrieval. 3,Secondary antibody was diluted at
1:200 (room temperature, 30min) .



Immunohistochemical analysis of paraffin-embedded Human lymphoma. 1, Antibody was diluted at 1:200 (4°,overnight) .
2, High-pressure and temperature EDTA, pH8.0 was used for antigen retrieval. 3,Secondary antibody was diluted at
1:200 (room temperature, 30min) .



Immunohistochemical analysis of paraffin-embedded Human lymphoma. 1, Antibody was diluted at 1:200 (4°,overnight) .
2, High-pressure and temperature EDTA, pH8.0 was used for antigen retrieval. 3,Secondary antibody was diluted at
1:200 (room temperature, 30min) .

Product Name: FOXP1 Rabbit Polyclonal Antibody
Catalog #: APRab11113



Note

For research use only.