

**Product Name: FoxJ1 Rabbit Polyclonal Antibody**  
**Catalog #: APRab11089**



## Summary

<b>Production Name</b>	FoxJ1 Rabbit Polyclonal Antibody
<b>Description</b>	Rabbit Polyclonal Antibody
<b>Host</b>	Rabbit
<b>Application</b>	WB,IHC,ELISA
<b>Reactivity</b>	Human,Mouse,Rat

## Performance

<b>Conjugation</b>	Unconjugated
<b>Modification</b>	Unmodified
<b>Isotype</b>	IgG
<b>Clonality</b>	Polyclonal
<b>Form</b>	Liquid
<b>Storage</b>	Store at 4°C short term. Aliquot and store at -20°C long term. Avoid freeze/thaw cycles.
<b>Buffer</b>	Liquid in PBS containing 50% glycerol, 0.5% BSA and 0.02% New type preservative N.
<b>Purification</b>	Affinity purification

## Immunogen

<b>Gene Name</b>	FOXJ1
<b>Alternative Names</b>	FOXJ1; FKHL13; HFH4; Forkhead box protein J1; Forkhead-related protein FKHL13; Hepatocyte nuclear factor 3 forkhead homolog 4; HFH-4
<b>Gene ID</b>	2302.0
<b>SwissProt ID</b>	Q92949.The antiserum was produced against synthesized peptide derived from human FOXJ1. AA range:271-320

## Application

<b>Dilution Ratio</b>	WB 1:500 - 1:2000. IHC 1:100 - 1:300. ELISA: 1:20000..
<b>Molecular Weight</b>	60kD

**Product Name: FoxJ1 Rabbit Polyclonal Antibody**  
**Catalog #: AP Rab11089**

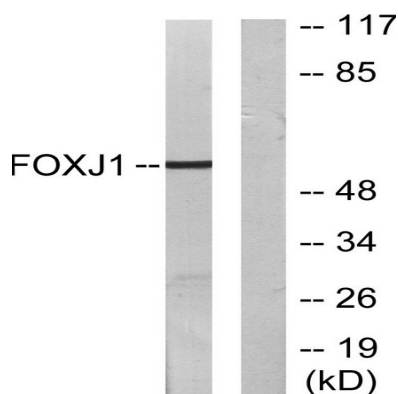


## Background

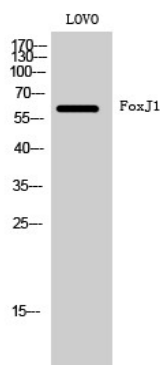
This gene encodes a member of the forkhead family of transcription factors. Similar genes in zebrafish and mouse have been shown to regulate the transcription of genes that control the production of motile cilia. The mouse ortholog also functions in the determination of left-right asymmetry. Polymorphisms in this gene are associated with systemic lupus erythematosus and allergic rhinitis.[provided by RefSeq, Sep 2009],developmental stage:Expressed in developing lung, kidney and central nervous system.,disease:Genetic variations in FOXJ1 may be associated with susceptibility to allergic rhinitis (ALRH) [MIM:607154]. Allergic rhinitis is a common disease of complex inheritance and is characterized by mucosal inflammation caused by allergen exposure.,function:May play an important role in cell fate determination during lung development and in spermatogenesis.,similarity:Contains 1 fork-head DNA-binding domain.,tissue specificity:Testis, oviduct, lung and brain cortex.,

## Research Area

## Image Data



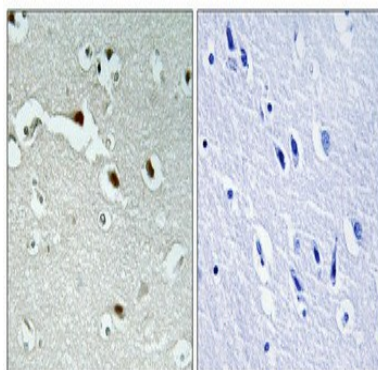
Western blot analysis of lysates from LOVO cells, using FOXJ1 Antibody. The lane on the right is blocked with the synthesized peptide.



Western Blot analysis of LOVO cells using FoxJ1 Polyclonal Antibody cells nucleus extracted by Minute TM Cytoplasmic and Nuclear Fractionation kit (SC-003, Invent biotech, MN, USA) .

**Product Name: FoxJ1 Rabbit Polyclonal Antibody**  
**Catalog #: APRab11089**

---



Immunohistochemical analysis of paraffin-embedded Human brain. Antibody was diluted at 1:100 (4°,overnight) . High-pressure and temperature Tris-EDTA,pH8.0 was used for antigen retrieval. Negative contrl (right) obtaned from antibody was pre-absorbed by immunogen peptide.

### **Note**

For research use only.