

**Product Name: FoxB1/2 Rabbit Polyclonal Antibody**  
**Catalog #: APRab11074**



## Summary

<b>Production Name</b>	FoxB1/2 Rabbit Polyclonal Antibody
<b>Description</b>	Rabbit Polyclonal Antibody
<b>Host</b>	Rabbit
<b>Application</b>	WB,ELISA
<b>Reactivity</b>	Human,Mouse

## Performance

<b>Conjugation</b>	Unconjugated
<b>Modification</b>	Unmodified
<b>Isotype</b>	IgG
<b>Clonality</b>	Polyclonal
<b>Form</b>	Liquid
<b>Storage</b>	Store at 4°C short term. Aliquot and store at -20°C long term. Avoid freeze/thaw cycles.
<b>Buffer</b>	Liquid in PBS containing 50% glycerol, 0.5% BSA and 0.02% New type preservative N.
<b>Purification</b>	Affinity purification

## Immunogen

<b>Gene Name</b>	FOXB1/FOXB2
<b>Alternative Names</b>	FOXB1; FKH5; Forkhead box protein B1; Transcription factor FKH-5; FOXB2; Forkhead box protein B2
<b>Gene ID</b>	27023/442425
<b>SwissProt ID</b>	Q99853/Q5VYV0.The antiserum was produced against synthesized peptide derived from human FOXB1/2. AA range:51-100

## Application

<b>Dilution Ratio</b>	WB 1:500 - 1:2000. ELISA: 1:20000
<b>Molecular Weight</b>	45kD

**Product Name: FoxB1/2 Rabbit Polyclonal Antibody**  
**Catalog #: APRab11074**

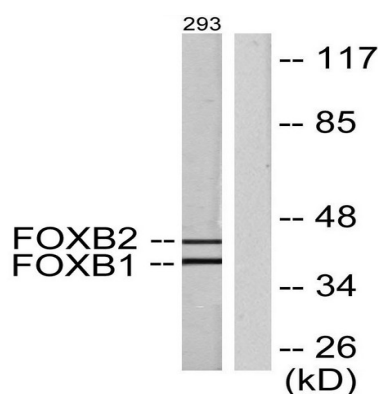


## Background

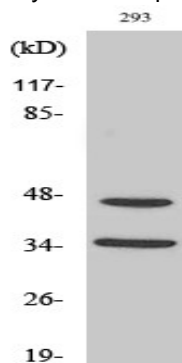
similarity:Contains 1 fork-head DNA-binding domain.,similarity:Contains 1 fork-head DNA-binding domain.,

## Research Area

## Image Data



Western blot analysis of lysates from 293 cells, using FOXB1/2 Antibody. The lane on the right is blocked with the synthesized peptide.



Western Blot analysis of various cells using FoxB1/2 Polyclonal Antibody cells nucleus extracted by Minute TM Cytoplasmic and Nuclear Fractionation kit (SC-003, Invent biotech, MN, USA) .

## Note

For research use only.