

Summary

Production Name	Flt3-L Rabbit Polyclonal Antibody
Description	Rabbit Polyclonal Antibody
Host	Rabbit
Application	WB,ELISA
Reactivity	Human,Rat,Mouse

Performance

Conjugation	Unconjugated
Modification	Unmodified
Isotype	IgG
Clonality	Polyclonal
Form	Liquid
Storage	Store at 4°C short term. Aliquot and store at -20°C long term. Avoid freeze/thaw cycles.
Buffer	Liquid in PBS containing 50% glycerol, 0.5% BSA and 0.02% New type preservative N.
Purification	Affinity purification

Immunogen

Gene Name	FLT3LG
Alternative Names	FLT3LG; Fms-related tyrosine kinase 3 ligand; Flt3 ligand; Flt3L; SL cytokine
Gene ID	2323.0
SwissProt ID	P49771.The antiserum was produced against synthesized peptide derived from human Flt3 ligand. AA range:171-220

Application

Dilution Ratio	WB 1:500 - 1:2000. ELISA: 1:20000
Molecular Weight	26kD

Background

Product Name: Flt3-L Rabbit Polyclonal Antibody
Catalog #: APRab11037

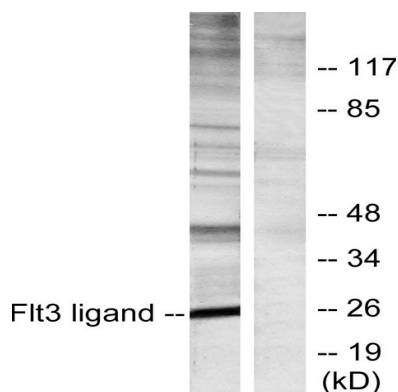


Dendritic cells (DCs) provide the key link between innate and adaptive immunity by recognizing pathogens and priming pathogen-specific immune responses. FLT3LG controls the development of DCs and is particularly important for plasmacytoid DCs and CD8 (see MIM 186910)-positive classical DCs and their CD103 (ITGAE; MIM 604682)-positive tissue counterparts (summary by Sathaliyawala et al., 2010 [PubMed 20933441]).[supplied by OMIM, Jan 2011],function:Stimulates the proliferation of early hematopoietic cells. Synergizes well with a number of other colony stimulating factors and interleukins.,subunit:Homodimer (isoform 2),.

Research Area

Cytokine-cytokine receptor interaction;Hematopoietic cell lineage;Pathways in cancer;

Image Data



Western blot analysis of lysates from Jurkat cells, using Flt3 ligand Antibody. The lane on the right is blocked with the synthesized peptide.



Western Blot analysis of various cells using Flt3-L Polyclonal Antibody

Note

For research use only.