

Summary

Production Name	Fgl2 Rabbit Polyclonal Antibody
Description	Rabbit Polyclonal Antibody
Host	Rabbit
Application	WB,ELISA
Reactivity	Human,Rat,Mouse

Performance

Conjugation	Unconjugated
Modification	Unmodified
Isotype	IgG
Clonality	Polyclonal
Form	Liquid
Storage	Store at 4°C short term. Aliquot and store at -20°C long term. Avoid freeze/thaw cycles.
Buffer	Liquid in PBS containing 50% glycerol, 0.5% BSA and 0.02% New type preservative N.
Purification	Affinity purification

Immunogen

Gene Name	FGL2
Alternative Names	FGL2; Fibroleukin; Fibrinogen-like protein 2; pT49
Gene ID	10875.0
SwissProt ID	Q14314.The antiserum was produced against synthesized peptide derived from human Fgl2. AA range:38-87

Application

Dilution Ratio	WB 1:500 - 1:2000. ELISA: 1:10000
Molecular Weight	55kD

Background

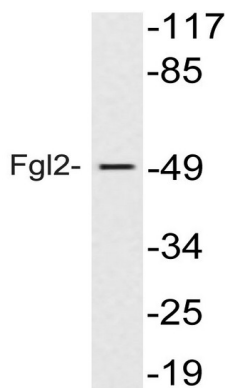
Product Name: Fgl2 Rabbit Polyclonal Antibody
Catalog #: APRab10953



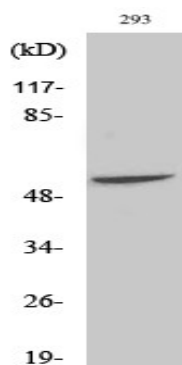
fibrinogen like 2(FGL2) Homo sapiens The protein encoded by this gene is a secreted protein that is similar to the beta- and gamma-chains of fibrinogen. The carboxyl-terminus of the encoded protein consists of the fibrinogen-related domains (FRED). The encoded protein forms a tetrameric complex which is stabilized by interchain disulfide bonds. This protein may play a role in physiologic functions at mucosal sites. [provided by RefSeq, Jul 2008],function:May play a role in physiologic lymphocyte functions at mucosal sites.,similarity:Contains 1 fibrinogen C-terminal domain.,subunit:Homotetramer; disulfide-linked.,tissue specificity:Constitutively expressed in cytotoxic T-cells.,

Research Area

Image Data



Western blot analysis of lysate from 293 cells treated with insulin, using Fgl2 antibody.



Western Blot analysis of various cells using Fgl2 Polyclonal Antibody

Note

For research use only.