

Product Name: FDC-SP Rabbit Polyclonal Antibody
Catalog #: APRab10892



Summary

Production Name	FDC-SP Rabbit Polyclonal Antibody
Description	Rabbit Polyclonal Antibody
Host	Rabbit
Application	IHC,ELISA
Reactivity	Human,Rat,Mouse

Performance

Conjugation	Unconjugated
Modification	Unmodified
Isotype	IgG
Clonality	Polyclonal
Form	Liquid
Storage	Store at 4°C short term. Aliquot and store at -20°C long term. Avoid freeze/thaw cycles.
Buffer	Liquid in PBS containing 50% glycerol, 0.5% BSA and 0.02% New type preservative N.
Purification	Affinity purification

Immunogen

Gene Name	FDCSP
Alternative Names	FDCSP; C4orf7; Follicular dendritic cell secreted peptide; FDC secreted protein; FDC-SP
Gene ID	260436.0
SwissProt ID	Q8NFU4.Synthesized peptide derived from the C-terminal region of human FDC-SP. AA range: 26-75

Application

Dilution Ratio	IHC 1:100-1:300 ELISA: 1:40000
Molecular Weight	

Background

This gene encodes a small secreted protein that is expressed in follicular dendritic cells. This protein specifically binds to

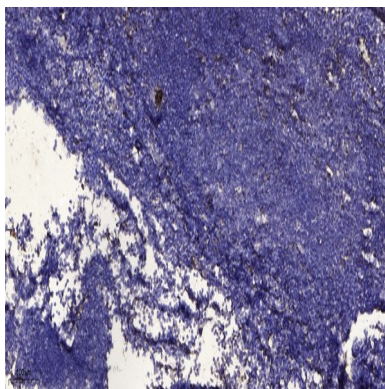
Product Name: FDC-SP Rabbit Polyclonal Antibody
Catalog #: APRab10892



activated B cells, and functions as a regulator of antibody responses. It is also thought to contribute to tumor metastases by promoting cancer cell migration and invasion. [provided by RefSeq, Dec 2011],function:Can bind to the surface of B-lymphoma cells, but not T-lymphoma cells, consistent with a function as a secreted mediator acting upon B-cells.,tissue specificity:Abundantly expressed in tonsil, lymph node, and trachea; strong expression in prostate; lower expression in thyroid, stomach, and colon.,

Research Area

Image Data



Immunohistochemical analysis of paraffin-embedded human tonsil. 1, Antibody was diluted at 1:200 (4° overnight) . 2, Tris-EDTA,pH9.0 was used for antigen retrieval. 3,Secondary antibody was diluted at 1:200 (room temperature, 30min) .

Note

For research use only.