

Product Name: FASTKD1 Rabbit Polyclonal Antibody
Catalog #: APRab10842



Summary

Production Name	FASTKD1 Rabbit Polyclonal Antibody
Description	Rabbit Polyclonal Antibody
Host	Rabbit
Application	WB,ELISA
Reactivity	Human,Mouse,Monkey

Performance

Conjugation	Unconjugated
Modification	Unmodified
Isotype	IgG
Clonality	Polyclonal
Form	Liquid
Storage	Store at 4°C short term. Aliquot and store at -20°C long term. Avoid freeze/thaw cycles.
Buffer	Liquid in PBS containing 50% glycerol, 0.5% BSA and 0.02% New type preservative N.
Purification	Affinity purification

Immunogen

Gene Name	FASTKD1
Alternative Names	FASTKD1; KIAA1800; FAST kinase domain-containing protein 1
Gene ID	79675.0
SwissProt ID	Q53R41.The antiserum was produced against synthesized peptide derived from human FAKD1. AA range:561-610

Application

Dilution Ratio	WB 1:500 - 1:2000. ELISA: 1:10000. Not yet tested in other applications.
Molecular Weight	97kD

Background

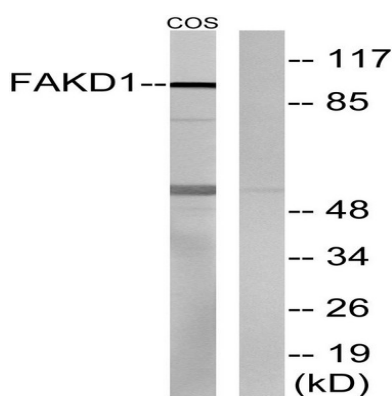
Product Name: FASTKD1 Rabbit Polyclonal Antibody
Catalog #: AP Rab10842



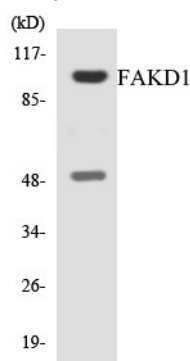
caution:It is uncertain whether Met-1 or Met-15 is the initiator.,similarity:Belongs to the FAST kinase family.,similarity:Contains 1 RAP domain.,caution:It is uncertain whether Met-1 or Met-15 is the initiator.,similarity:Belongs to the FAST kinase family.,similarity:Contains 1 RAP domain.,

Research Area

Image Data



Western blot analysis of lysates from COS7 cells, using FAKD1 Antibody. The lane on the right is blocked with the synthesized peptide.



Western blot analysis of the lysates from HT-29 cells using FAKD1 antibody.



Product Name: FASTKD1 Rabbit Polyclonal Antibody
Catalog #: APRab10842



Western Blot analysis of various cells using FASTKD1 Polyclonal Antibody

Note

For research use only.