

Product Name: FAM111B Rabbit Polyclonal Antibody
Catalog #: APRab10809



Summary

Production Name	FAM111B Rabbit Polyclonal Antibody
Description	Rabbit Polyclonal Antibody
Host	Rabbit
Application	IHC,ELISA
Reactivity	Human,Rat,Mouse

Performance

Conjugation	Unconjugated
Modification	Unmodified
Isotype	IgG
Clonality	Polyclonal
Form	Liquid
Storage	Store at 4°C short term. Aliquot and store at -20°C long term. Avoid freeze/thaw cycles.
Buffer	Liquid in PBS containing 50% glycerol, 0.5% BSA and 0.02% New type preservative N.
Purification	Affinity purification

Immunogen

Gene Name	FAM111B
Alternative Names	FAM111B; CANP; Protein FAM111B; Cancer-associated nucleoprotein
Gene ID	374393.0
SwissProt ID	Q6SJ93.The antiserum was produced against synthesized peptide derived from human F111B. AA range:281-330

Application

Dilution Ratio	IHC 1:100-1:200 ELISA: 1:5000
Molecular Weight	

Background

This gene encodes a protein with a trypsin-like cysteine/serine peptidase domain in the C-terminus. Mutations in this gene

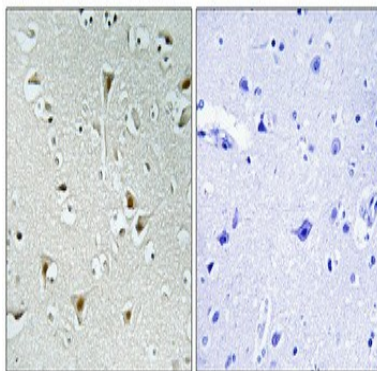
Product Name: FAM111B Rabbit Polyclonal Antibody
Catalog #: APRab10809



are associated with an autosomal dominant form of hereditary fibrosing poikiloderma (HFP). Affected individuals display mottled pigmentation, telangiectasia, epidermal atrophy, tendon contractures, and progressive pulmonary fibrosis. Alternative splicing results in multiple transcript variants encoding distinct isoforms. A paralog of this gene which also has a trypsin‐like peptidase domain, FAM111A, is located only 16 kb from this gene on human chromosome 11q12.1. [provided by RefSeq, Apr 2014],sequence caution:Contaminating sequence. Potential poly-A sequence.,similarity:Belongs to the FAM111 family.,

Research Area

Image Data



Immunohistochemical analysis of paraffin-embedded Human brain. Antibody was diluted at 1:100 (4°,overnight) . High-pressure and temperature Tris-EDTA,pH8.0 was used for antigen retrieval. Negative contrl (right) obtaned from antibody was pre-absorbed by immunogen peptide.

Note

For research use only.