

Product Name: Ethanolamine kinase 2 Rabbit Polyclonal Antibody
Catalog #: APRab10645

Summary

Production Name	Ethanolamine kinase 2 Rabbit Polyclonal Antibody
Description	Rabbit Polyclonal Antibody
Host	Rabbit
Application	WB,ELISA
Reactivity	Human,Mouse

Performance

Conjugation	Unconjugated
Modification	Unmodified
Isotype	IgG
Clonality	Polyclonal
Form	Liquid
Storage	Store at 4°C short term. Aliquot and store at -20°C long term. Avoid freeze/thaw cycles.
Buffer	Liquid in PBS containing 50% glycerol, 0.5% BSA and 0.02% New type preservative N.
Purification	Affinity purification

Immunogen

Gene Name	ETNK2
Alternative Names	ETNK2; EK12; HMFT1716; Ethanolamine kinase 2; EK1 2; Ethanolamine kinase-like protein
Gene ID	55224.0
SwissProt ID	Q9NVF9.The antiserum was produced against synthesized peptide derived from human EK12. AA range:51-100

Application

Dilution Ratio	WB 1:500 - 1:2000. ELISA: 1:5000.
Molecular Weight	45kD

Product Name: Ethanolamine kinase 2 Rabbit Polyclonal Antibody
Catalog #: AP Rab10645



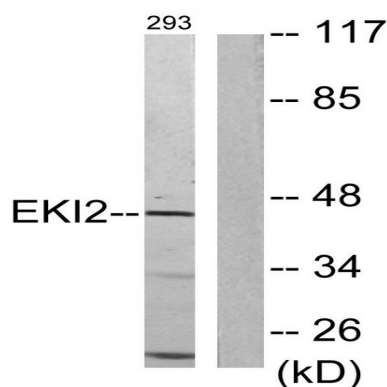
Background

The protein encoded by this gene is a member of choline/ethanolamine kinase family which catalyzes the first step of phosphatidylethanolamine (PtdEtn) biosynthesis via the cytidine diphosphate (CDP) ethanolamine pathway. Alternative splicing results in multiple transcript variants. [provided by RefSeq, Jul 2014], catalytic activity: ATP + ethanolamine = ADP + O-phosphoethanolamine., similarity: Belongs to the choline/ethanolamine kinase family.,

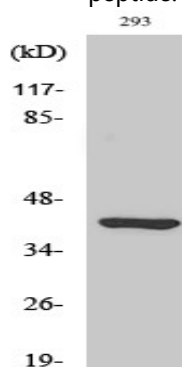
Research Area

Glycerophospholipid metabolism;

Image Data



Western blot analysis of lysates from 293 cells, using EK12 Antibody. The lane on the right is blocked with the synthesized peptide.



Western Blot analysis of various cells using Ethanolamine kinase 2 Polyclonal Antibody

Note

For research use only.