

**Product Name: eRF3a Rabbit Polyclonal Antibody**  
**Catalog #: APRab10586**



## Summary

<b>Production Name</b>	eRF3a Rabbit Polyclonal Antibody
<b>Description</b>	Rabbit Polyclonal Antibody
<b>Host</b>	Rabbit
<b>Application</b>	WB,IHC,ELISA
<b>Reactivity</b>	Human,Mouse,Rat

## Performance

<b>Conjugation</b>	Unconjugated
<b>Modification</b>	Unmodified
<b>Isotype</b>	IgG
<b>Clonality</b>	Polyclonal
<b>Form</b>	Liquid
<b>Storage</b>	Store at 4°C short term. Aliquot and store at -20°C long term. Avoid freeze/thaw cycles.
<b>Buffer</b>	Liquid in PBS containing 50% glycerol, 0.5% BSA and 0.02% New type preservative N.
<b>Purification</b>	Affinity purification

## Immunogen

<b>Gene Name</b>	GSPT1 GSPT1; ERF3A; Eukaryotic peptide chain release factor GTP-binding subunit ERF3A;
<b>Alternative Names</b>	Eukaryotic peptide chain release factor subunit 3a; eRF3a; G1 to S phase transition protein 1 homolog
<b>Gene ID</b>	2935.0
<b>SwissProt ID</b>	P15170.The antiserum was produced against synthesized peptide derived from human GSPT1. AA range:101-150

## Application

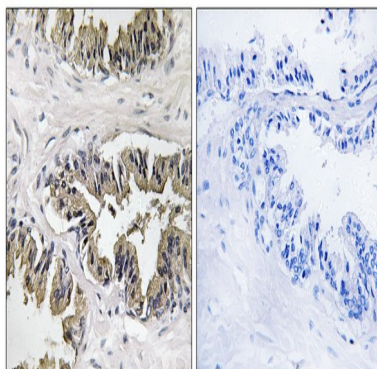
<b>Dilution Ratio</b>	WB 1:500 - 1:2000. IHC 1:100 - 1:300. ELISA: 1:40000..
<b>Molecular Weight</b>	55kD

## Background

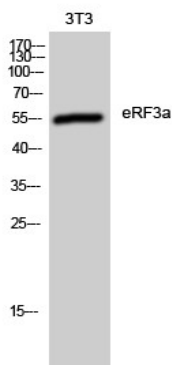
function:Involved in translation termination in response to the termination codons UAA, UAG and UGA. Stimulates the activity of ERF1. Involved in regulation of mammalian cell growth.,similarity:Belongs to the GTP-binding elongation factor family. ERF3 subfamily.,subunit:Component of the mRNA surveillance SURF complex, at least composed of ERF1, ERF3 (ERF3A or ERF3B), EEF2, UPF1/RENT1, SMG1, SMG8 and SMG9.,function:Involved in translation termination in response to the termination codons UAA, UAG and UGA. Stimulates the activity of ERF1. Involved in regulation of mammalian cell growth.,similarity:Belongs to the GTP-binding elongation factor family. ERF3 subfamily.,subunit:Component of the mRNA surveillance SURF complex, at least composed of ERF1, ERF3 (ERF3A or ERF3B), EEF2, UPF1/RENT1, SMG1, SMG8 and SMG9.,

## Research Area

## Image Data



Immunohistochemistry analysis of paraffin-embedded human prostate carcinoma tissue, using GSPT1 Antibody. The picture on the right is blocked with the synthesized peptide.



Western Blot analysis of 3T3 cells using eRF3a Polyclonal Antibody

**Product Name: eRF3a Rabbit Polyclonal Antibody**  
**Catalog #: APRab10586**

---



**Note**

For research use only.