

Summary

Production Name	E-Ras Rabbit Polyclonal Antibody
Description	Rabbit Polyclonal Antibody
Host	Rabbit
Application	IF, WB, ELISA
Reactivity	Human, Rat, Mouse

Performance

Conjugation	Unconjugated
Modification	Unmodified
Isotype	IgG
Clonality	Polyclonal
Form	Liquid
Storage	Store at 4°C short term. Aliquot and store at -20°C long term. Avoid freeze/thaw cycles.
Buffer	Liquid in PBS containing 50% glycerol, 0.5% BSA and 0.02% New type preservative N.
Purification	Affinity purification

Immunogen

Gene Name	ERAS
Alternative Names	ERAS; HRAS2; HRASP; GTPase ERas; E-Ras; Embryonic stem cell-expressed Ras
Gene ID	3266.0
SwissProt ID	Q7Z444. The antiserum was produced against synthesized peptide derived from human ERAS. AA range: 184-233

Application

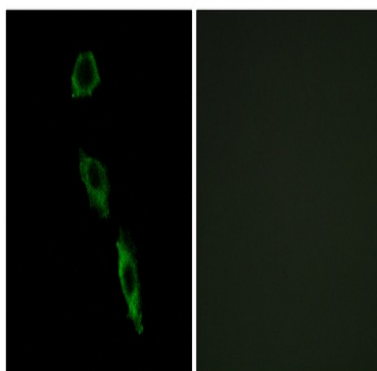
Dilution Ratio	WB 1:500 - 1:2000. IF 1:200 - 1:1000. ELISA: 1:20000. Not yet tested in other applications.
Molecular Weight	25kD

Background

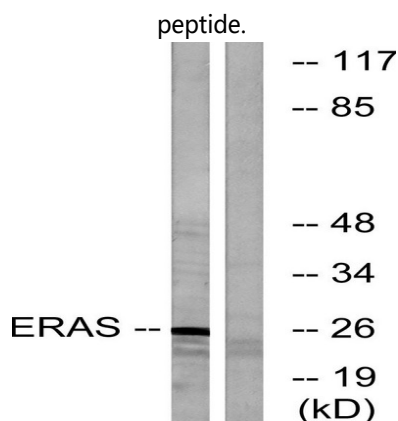
This gene encodes a constitutively active member of the small GTPase Ras protein family. The encoded protein activates the phosphatidylinositol 3-kinase signal transduction pathway in undifferentiated stem cells, but is not expressed in differentiated cells. This gene may be involved in cancer and chemotherapy resistance. [provided by RefSeq, Dec 2012],enzyme regulation:Alternate between an inactive form bound to GDP and an active form bound to GTP. Activated by a guanine nucleotide-exchange factor (GEF) and inactivated by a GTPase-activating protein (GAP),function:Ras proteins bind GDP/GTP and possess intrinsic GTPase activity. Plays an important role in the tumor-like growth properties of embryonic stem cells.,similarity:Belongs to the small GTPase superfamily. Ras family.,subunit:Interacts with PIK3CD,

Research Area

Image Data

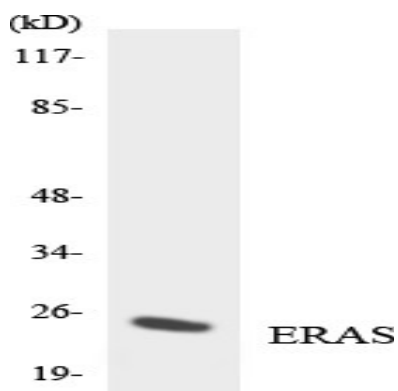


Immunofluorescence analysis of A549 cells, using ERAS Antibody. The picture on the right is blocked with the synthesized peptide.



Western blot analysis of lysates from Jurkat cells, using ERAS Antibody. The lane on the right is blocked with the synthesized peptide.

Product Name: E-Ras Rabbit Polyclonal Antibody
Catalog #: APRab10566



Western blot analysis of the lysates from HeLa cells using ERAS antibody.

Note

For research use only.