

**Product Name: Epsin 1 Rabbit Polyclonal Antibody**  
**Catalog #: APRab10554**



## Summary

<b>Production Name</b>	Epsin 1 Rabbit Polyclonal Antibody
<b>Description</b>	Rabbit Polyclonal Antibody
<b>Host</b>	Rabbit
<b>Application</b>	WB,ELISA
<b>Reactivity</b>	Human,Mouse,Rat

## Performance

<b>Conjugation</b>	Unconjugated
<b>Modification</b>	Unmodified
<b>Isotype</b>	IgG
<b>Clonality</b>	Polyclonal
<b>Form</b>	Liquid
<b>Storage</b>	Store at 4°C short term. Aliquot and store at -20°C long term. Avoid freeze/thaw cycles.
<b>Buffer</b>	Liquid in PBS containing 50% glycerol, 0.5% BSA and 0.02% New type preservative N.
<b>Purification</b>	Affinity purification

## Immunogen

<b>Gene Name</b>	EPN1
<b>Alternative Names</b>	EPN1; Epsin-1; EH domain-binding mitotic phosphoprotein; EPS-15-interacting protein 1
<b>Gene ID</b>	29924.0
<b>SwissProt ID</b>	Q9Y6I3.Synthesized peptide derived from Epsin 1 . at AA range: 140-220

## Application

<b>Dilution Ratio</b>	WB 1:500 - 1:2000. ELISA: 1:40000.
<b>Molecular Weight</b>	85kD

## Background

**Product Name: Epsin 1 Rabbit Polyclonal Antibody**  
**Catalog #: AP Rab10554**

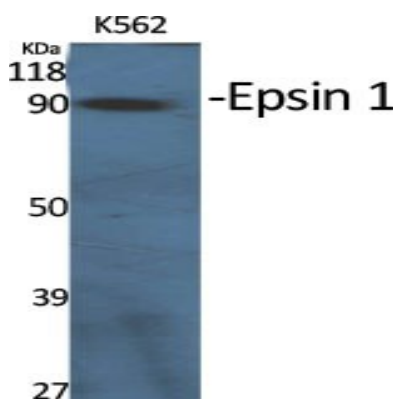


This gene encodes a member of the epsin protein family. The encoded protein binds clathrin and is involved in the endocytosis of clathrin-coated vesicles. Loss of function of this gene is associated with reduced tumor growth and progression in certain cancer types. [provided by RefSeq, Mar 2016],domain:The DPW repeat domain is involved in AP2A2 and clathrin binding.,domain:The NPF repeat domain is involved in EPS15 binding.,function: Binds to membranes enriched in phosphatidylinositol-4,5-bisphosphate (PtdIns(4,5)P<sub>2</sub>). Modifies membrane curvature and facilitates the formation of clathrin-coated invaginations (By similarity). Regulates receptor-mediated endocytosis.,online information:The bubble's bend -Issue 42 of January 2004,PTM:Phosphorylated on serine and/or threonine residues in mitotic cells. Phosphorylation reduces interaction with REPS2, AP-2 and the membrane fraction. Depolarization of synaptosomes results in dephosphorylation.,PTM:Ubiquitinated.,similarity:Belongs to the epsin family.,similarity:Contains 1 ENTH (epsin N-terminal homology) domain.,similarity:Contains 2 UIM (ubiquitin-interacting motif) repeats.,subcellular location:Associated with the cytoplasmic membrane at sites where clathrin-coated pits are forming. Colocalizes with clathrin and AP-2 in a punctate pattern on the plasma membrane. Detected in presynaptic nerve terminals and in Golgi stacks. May shuttle to the nucleus when associated with ZBTB16/ZNF145.,subunit:Monomer. Binds clathrin, ZBTB16/ZNF145 and ITSN1. Binds ubiquitinated proteins (By similarity). Binds REPS2, EPS15, AP2A1 and AP2A2. Interacts with RALBP1 in a complex also containing NUMB and TFAP2A during interphase and mitosis.,

## Research Area

Endocytosis;

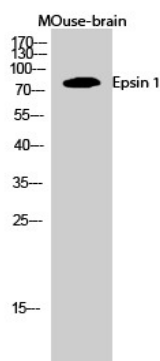
## Image Data



Western Blot analysis of various cells using Epsin 1 Polyclonal Antibody diluted at 1: 1000

**Product Name: Epsin 1 Rabbit Polyclonal Antibody**  
**Catalog #: APRab10554**

---



Western Blot analysis of MOuse-brain cells using Epsin 1 Polyclonal Antibody diluted at 1: 1000

### **Note**

For research use only.